

No. 150 October/November 2014

EDITORIAL

This year seems to be the year of anniversaries! The 100th anniversary of the outbreak of WWI has been remembered nationwide but have you seen the exhibition in St Andrews Church put together by John Shepperson? If not try to go and see it -it will be there until Armistice day.

We have also marked this with the supplement you have received with this issue, if you know someone who maybe had a connection to Swavesey but has left perhaps you could pass it on to them if you do not want to keep it yourself. Did you know that the Memorial Hall, which is used by many village groups, was built in memory of those who died in WW1? A local reporter was involved with the fund raising- you can find out more by visiting the exhibition.

A happier anniversary is our own 150th issue and also our "silver" 25 years anniversary since your Meridians first issue.

To mark the occasion The Meridian is donating a bench for the village to be placed at Swan Pond so you can admire the pond, and also to provide a place to stop on the way to and back from the guided bus.

Our next issue will be the one that covers December and January so please let us have all your information about Xmas events big or small in good time - the deadline is **20th October**

Editor.

Cover Photos - Front Covers from the past 25 years

IN THIS ISSUE ...

Editorial	page 1
Meridian Committee	page 2
Major Events List	page 2
Dates for your diary and forthcoming events	page 3-4
Club Reports	page 4-13
Village News	Page 14-22
School Information	page 23-26
Churches	page 27-32
Parish and County news	page 33-42
Community Groups & Charities table	page 43
Club Information	page 44-46
Extra Magazines, Major Events & Birthday forms	page 47-48
Useful Telephone Numbers	page 49

MERIDIAN COMMITTEE

Editor:	April Martin	Tel: 01954 200533
Treasurer:	David Gedny	Tel: 01954 231305
Production:	Alan Morris	Tel: 01954 202664
Advertising:	Rob Wills	Tel: 01954 232947
Distribution	Selwyn Richardson	Tel 01954 202974
Subscriptions	Jan Waller	Tel: 01954 230795
Complaints	Maureen Hadfield	Tel: 01954 230414
Proofreading	Alison Lucas	Tel: 01954 232984
General Assistant	Simon Ansell	Tel: 01954 231137
Website:	Alan Morris	Tel: 01954 202664
Website:	www.swavesey.org.uk	
Emails:	editor@swavesey.org.uk advert@swavesey.org.uk	

Major Events List

This list is intended to avoid major events clashing on the same day. It will only work if we are advised of all such events, so please let us know as soon as you can confirm the details. A form is available at the back of this magazine. We will list them in this section of the magazine and also on our website at www.swavesey.org.uk

2014

Saturday, October 4, Teddy Bear Parachute Jump 2-4pm from St Andrew's Tower, Rev'd John-David Yule, (01954) 231903

Thursday 16, Friday 17 & Saturday 18 October - Swavesey RADSOC presents "Season's Greetings" by Alan Ayckbourn. 7.30pm in Swavesey Venue at Swavesey Village College, Sarah Pearson, committee@swaveseyradsoc.org

Saturday, November 8, Toy Sale 2.00pm to 4.00pm in St Andrews Church, Rev'd John-David Yule, (01954) 231903

Saturday, November 22, Christmas Craft Fair - 10.00am to 4.30pm in the Memorial Hall, Carol Wood, 01954 202136

Saturday 13 and Sunday 14 December - Christmas Tree Festival in St Andrews Church, Revd John-David Yule, (01954) 231903

Scouts and Guides Community Work

During July the Parish Council was very pleased to have been able to arrange for two community projects to take place involving the local Guide and Scout groups.

Swavesey Guides

Swavesey Guides meets weekly in the village and in place of one of their regular meetings, the guides met at Moat Way Pond on Thursday 3rd July to carry out some pond dipping and to record the various insects and creatures they might find. With nets, sample trays, identification charts, bug pots and magnifying pots, they all donned their wellies and they all donned their wellies on the sunny evening to see what they could find living in Moat Way pond. With some help from Helen and Phil, local Ecology Officers, they recorded a wide variety of creatures over the couple of hours they were there including: 145 whirligig beetles, 124 waterboatmen, 101 pond skaters, 14 common/smooth newts, 3 ramshorn snails, 2 diving beetles and 1 water scorpion plus other insects and plantlife.



They all thoroughly enjoyed the evening and we hope they will be able to do this again in other village ponds to help us keep a track of what's living in the ponds.

The Parish Council has a 5-year plan to maintain the ponds and ensure the vegetation doesn't take over, so these pond dipping evenings are extremely helpful to us.

We'd like to thank the guides, Helen and Phil for taking part.



1st Swavesey Sea Scouts

For Community Week this year, the Scout Group carried out a gardening project around the community gardens of the Sheltered Housing in Thistle Green. There are a number of community flower beds around the bungalows, many of which had become overgrown with weeds and not many flowering shrubs.



Around 10 scouts plus a few adults arrived on Friday evening 4th July armed with trowels, forks and gloves. The Parish Council, using community funds donated by WISER Recycling from the recent doorstep collections of waste electrical items, had purchased shrubs and perennials to plant. The residents had donated funds for compost.



Some serious digging and weeding then ensued, with wheelie bins filling up with pulled up weeds. Everyone worked really hard to clear the areas and then plant the shrubs, including Lavenders, Geraniums, Sedums and others.

After around 2 hours, the work had been completed and some rather muddy scouts then departed.

The residents of the sheltered housing would like to thank the Scouts for their hard work and once the plants have become established and grown to fill the spaces, hopefully not so much weeding will be required in the future.



For information, contact
Brian Chapman 01954 230784
John Morley 01954 780803
Glynis Fenwick 01954 230634
OR info@fenlandsquash.org.uk

Living Sport are encouraging ladies (over 25 years) to participate in new sports, or return to a sport they played when younger.

I am therefore proposing to run a 6 week course on Tuesdays 8pm - 9pm at Fenland Squash Club (Swavesey Village College) on the following dates:

October 7, 14 and 21 and November 4, 11, and 18.

The aim is to learn how to play the game, or improve technique and everyone will be able to play matches by the end of the course.

The course is limited to 10 ladies and cost will be £15 for all six sessions. Racquets and balls provided (both squash and racket-ball).

If you would like more information, contact me on 01954 230634 or glynisfenwick@googlemail.com

Glynis Fenwick (Level 2 Coach)

Swavesey and District History Society

Programme 2014 - 15

21-Oct	A Carpenter at War: Trooper W R Wayman 1914-19	Carolyn Redmayne
	Carolyn found a diary kept by her Grandfather during his war service	
18-Nov	Common rights and the origins of Englishness	Sue Oosthuizen
09-Dec	Members' family history - Several members will tell us about research they have undertaken into their ancestors	
20-Jan	John Clare – The Northamptonshire Poet	David Dykes
17-Feb	Wood, Wheels and Waggons	Reg Brown
17-Mar	Victorian Cambridgeshire; aspects of rural life	Mike Petty
21-Apr	Guthlac, Pega and Crowland's sacred isle	Dr. Avril Lumley
19-May	Fenland in the Roman period	Kasia Gdaniec

Our meetings are extremely friendly and open to everyone who has an interest in local history. All meetings are held in the Global Resources Room in Swavesey Village College at 7.30pm. The Annual General Meeting will be held at the December meeting.

For more information about the Society contact Carolyn Redmayne (01954 230037) or look at our website <http://www.swavesey.org.uk/history/>

Fen Drayton Bowls Club

Bored of the dark evenings already? Why not give indoor bowling a try?

Fen Drayton Bowls Club are looking for new members to play just for fun or in a league.

Roll-up practice nights are Monday and Friday 7-9pm and take place in Fen Drayton Village Hall. We have spare bowls so don't let that stop you giving it a try.

We are a very friendly club who would be delighted to welcome you for an informal session and a cup of tea.

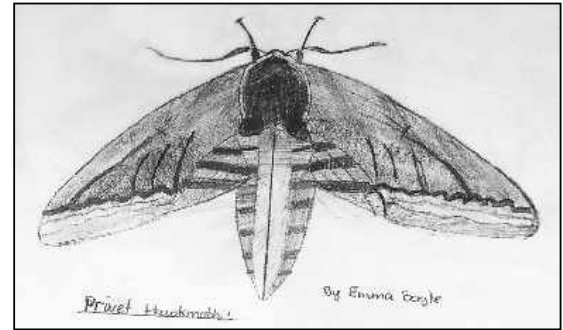
For more information, please contact Josie Charter on 01480 351059 or email josiecharter@hotmail.com

Things that Flutter in the Night

Since taking on an allotment at Hale Road, the learning curve has been steep. Definite no-nos are digging in winter (you'll lose your wellies in the clay), recklessly sowing beans and peas without nuclear type defences (mice will eat them) or growing anything of the cabbage variety without adequate netting (caterpillars will eat them). Then there are Selwyn's 'walkabouts' which prompt us into frenzied weeding with a couple of hours to spare, making the plot look as if we knew what we were doing. Our aim was organic allotmenting. The slugs soon put paid to such fancy ideas. They ate everything, and war ensued. It was while contemplating waves of groundsel carpeting our plot that we noticed armies of strikingly yellow-black striped caterpillars on it. A caterpillar eating a weed rather than coveted crops? We had to find out more. It turned out to be larvae of the Cinnabar, a moth with beautiful bright red wings. I have yet to see one. However the caterpillars were there, in large numbers.

At the time Selwyn was mobbing innocent plot holders about writing the next Meridian article. A stressful idea, especially if all we could think of was how best to kill things. Then I remembered several RSPB activities we had joined - spotting bats, moths and pumpkin-birds. Why not find out what moths species our new allotments might be supporting? Hannah from the RSPB kindly agreed to help us, together with local moth expert Jeremy. Both enthusiasts thus turned up on the evening of 4th July, with moth trap, generator, and reference books. The trap was set, and with fellow allotmenters we huddled around and waited. And waited. It got dark. There was evidence of flutterings in the adjoining hedge, but nothing was tempted by the bright light. Jeremy provided various interesting moth facts and assured us that different species tend to fly in different waves throughout the night. We waited. It started to drizzle. Then, at around 22:30, we were bombarded by a wave of moths. Many tumbled into the trap. Those crashing on the white sheet under the trap were caught, identified under torchlight and passed around for us to marvel at. There were stunning different designs and very odd names (Setaceous Hebrew Character, The Shark, Buff Arches), and even in the torchlight you could appreciate the vibrant colours – odd, given moths are night creatures? Jeremy had told us about some of the larger moths that can be found in Britain. We are an optimistic lot. The first wave had passed and it began to get cold as we waited on. Then something large bounced off us and we scrambled to catch it. A Privet Hawkmoth, one of the largest ones in the UK. Its wings a dull brown grey, but its (substantial) body vividly pink and black striped, like a novelty sock. The highlight of the evening! At midnight the trap was turned off. We met again in the morning (in the rain) to see what had been caught inside. Jeremy had run a trap in his garden to capture species that fly past our bedtime. This was very worth seeing, including Poplar and Elephant Hawkmoths and the perhaps rarer beautifully spotted Peach Blossom. Revisiting our sleepy moths in daylight, there were additional species in the trap, and daylight really brought out their colours and patterns.

Thank you Hannah, the RSPB and Jeremy for making this such an educational and memorable event. Who would have thought there is such a wealth of moths flying at night while we are all tucked up in our beds?



As we left the night before we noticed a lot of moths flying in and out of Selwyn's cabbage netting. But we did not tell him that.

Our moth hunt took place on National Moth Day. Numbers of almost 50 species of our catch were submitted by Jeremy to the National Moth Day Survey.

Anja, plot 4.

Swavesey Community Choir

I hope everyone has had a wonderful Summer.

We started our new term on 10th September and rehearsals are well under way for our Christmas Concert. This will be on Saturday 6th December at St. Andrew's Church and in addition to a variety of Christmas Carols we will be performing Christmas Cantata (Geoffrey Bush).

Please make a note in your diary as we would like to have as many people there as possible. There will be mince pies, mulled wine and fantastic singing!!!

We are also hoping to put on two further concerts in 2015 and the details of these will appear in the next Meridian.

Please take a look at our website for details of the choir, past performances and future plans www.swaveseycommunitychoir.co.uk.

We are delighted to welcome several new members to the choir but we are always looking for new members, particularly younger members, so why not come along and give it a try. We are a very friendly bunch meeting every Wednesday during term time at Swavesey Village College from 7.30 pm until 9.00 pm Please contact me if you have any questions: Chrissie Richardson 07881 824095.

Happy Singing ©

Back to the Future

Every year at this time I'm back where I was last year; due to our early August deadline I'm trying to write about October and November events when they are so far in the future that as yet we haven't even enjoyed those I told you about in the last magazine. In fact apart from our most enjoyable Annual Barbecue in Peter and Carrie Looper's garden during the Summer break we have hardly seen each other in weeks. However it is highly unlikely that our members have put their gear into storage for this time, quite the opposite, and we look forward to seeing the results which will soon appear in this year's competition entries. On October 16th we have the first of our prestigious club competitions with the Annual Projected Image, hotly contested; November 4th we travel to St Neots for an Inter-club Battle, and on November 13th the competition will be fierce for our important Monochrome Trophy.

We have four stunning evenings planned. For the armchair travellers among us we can travel the Inca trail on October 9th with Stafford Steel, on October 23rd Hunter Kennedy will show us his highly successful minimalist landscapes. On November 20th the very experienced Ken Sullivan will show us 'Underwater Photography'. Ken started off with a borrowed Instamatic with a homemade plastic housing, there is hope for us all. An evening not to be missed is November 27th when our great favourite, John Brackenbury returns. John has written many magazine articles and five books on close-up natural history photography; his illustrated talks are a delight and are highly recommended to non-photographers too.

Our workshop on November 6th is 'Get to know your camera and how to use it.' with helpful advice for virtual beginners and the most expert among us. At half term as the college will be closed we plan to visit Ely for a night shoot on 2nd October; our days out have proved very popular, especially last Spring's visit to Lea Valley Water Sports, so we plan to return there on Saturday 1st November, so keep these days free.

I was not allowed to reveal the new programme in your last magazine, we hope you are pleased with what you can now see. Please come along any evening if anything takes your interest.

Mo Hadfield
Swavesey Camera Club
www.swaveseycameraclub.co.uk

Traditional Jazz Club

This Traditional Jazz Club was recently reopened by its original founders Dave & Sheila Dyer.

The next session of Live Jazz is
Wednesday 15th October
with The Ouse Valley Jazzband.

The Venue is at:
The Leverington Sports(Jazz) Club,
Church Rd, PE13 5DE
From 8-10.30pm
Bar/ Dance Floor
Comfortable seating

All welcome admittance £7.50
Contact Dave/Sheila 01945 588325

SWAVESEY FESTIVAL 2014

Registered Charity No. 1128778

100 Club Monthly Draw

Thanks for your support for the Swavesey Festival - the 100 Club income helps keep the Festival going. To take part phone Sally Unwin on (01954) 230200.

June

Wendy Norton £60, Shirley Smith £30, Ruth Shrimpton £15

July

Lisa Boyce £60, Carol Dyer £30, Robert Stone £15

August

Jill Bassett £60, Sue Ellington £30 Vera Doggett £15

www.swaveseyfestival.org.uk



VILLAGE NEWS

Electrical Waste Kerbside Collection on behalf of Swavesey Parish Council

Do you have electrical items that you no longer use or want? WISER Recycling can help You, and You can help your Parish Council....

WISER Recycling are a local recycling company based in St Ives and will be conducting a collection of Household Waste Electrical and Electronic Equipment (WEEE) on **Thursday 16th October 2014**

Electrical items will be collected in the morning by WISER vehicles. We will collect any electrical item (including non-working) from hairdryers, videos, microwaves, to televisions and fridge/freezers - basically, anything with a plug on. WISER Recycling will collect from right outside your house! All items will be taken to our fully licensed treatment facility in St Ives for Reuse, Refurbishment or Recycling.

The Parish Council will receive a revenue for the WEEE Waste collected, to be spent on Community Projects.

***PLEASE PLACE YOUR ITEMS 'KERBSIDE' BY 10:00 –
IF POSSIBLE, PLEASE AVOID PLACING OUTSIDE THE
EVENING BEFORE.***

If you are unable to move your larger items outside, please contact us 01480 464 111 – and our Operatives will attend your property to assist.

WISER has partnerships with many local and regional charities including Emmaus, Lighthouse, i-Trust and Eco-Computer Systems through which it sells working items back to social groups and low income families. We are full permitted and authorised by the Environment Agency and operate to international standards; ISO 9001 (Quality), ISO 14001 (Environmental) and OHSAS 18001 (Health & Safety), ensuring a professional recycling and recovery service, second to none.

If you'd like to find out more about WISER's services, please visit our website: www.wisergroup.co.uk

Collection arranged in association with Swavesey Parish Council and Neighbourhood Watch

Did you enjoy the Swavesey Festival?

Do you think you could help to make the 2016 festival even better?

Please join us for a preliminary meeting at 8:00pm on the **11th November** in the meeting room behind the Bethel Baptist Chapel.

While most of the actions will take place in 2016, we do need new people to join the existing committee members to start making plans – hope to see you there.

New Cycle/Foot/Bridle-path opens

On Tuesday 2nd September, the new cycle, foot and bridle path along Buckingham Road was formally opened by Cllr Noel Kavanagh – Cambridgeshire County Council's Cycling Champion and Martin Johnston – Chairman of Swavesey Parish Council.

The new route now provides a safe link between the village at Boxworth End, Buckingham Business Park and over the flyover to the Cambridge Services. Also providing a link for leisure routes to and around Boxworth and surrounding villages.



The route has been provided by a share of the funding from Cambridgeshire County Council's successful bid to the Department for Transport for £4.1m from the Cycle City Ambition Fund.

The Parish Council has now applied for further funding to reduce the speed limit along Buckingham Road from 60mph to 40mph, to make the route even safer and help reduce traffic speed entering the village, where cyclists, pedestrians and horse riders will be crossing the road.

Swavesey Parish Council, September 2014

Over Day Centre - Community Fund Awards

Dear Friend, I am delighted to inform you that the Over Day Centre has been successful in reaching the finals for the Lloyds Bank Community Fund Awards. All funds received are going towards the purchase of a new minibus. Our award will be one of the following:- £500, £1000, £2000 or £3000. Can you please help us receive the top award of £3000 by voting for us? It is possible to cast a vote by more than one method! Also please ask your friends/family to help us.

- Text "VOTE DWT" to 61119
- Vote online at <https://ly-cf.com/DWT>
- Visit our twitter page and retweet #CommFundDWT
- Vote by visiting a branch of Lloyds Bank in Cambridge or St Ives

Closing date 10th October

Many thanks for your support.
Sarah Peck
Head of Administration

VOLUNTEER DRIVERS NEEDED

OWLS Community Car Scheme provides a valuable service to those people living in Over, Willingham, Longstanton and Swavesey who need to attend medical appointments or make some social journeys, but are unable to access other means of transport.

Unfortunately we have recently lost the services of a few of our drivers for personal reasons and with a steady demand for journeys we now need additional volunteer drivers.

Drivers use their own cars and receive 45p a mile (30p from client +15p from C.C.C). Additional insurance cover is provided by Cambridgeshire County Council. Volunteers also have to undergo a DBS (formerly CRB) check.

Drivers offer particular times/days when they are available – in practice about 4 journeys a month is very helpful. So can you help maintain this very important Community service?

PLEASE ring the scheme's mobile number: 07505 254363 for an informal chat, without commitment.

RSPB News

As summer begins to take its final bow, now is the time to catch those last marvels of the sunny season before the autumn magic casts its orange glow on the Cambridgeshire countryside.

In this county we are lucky enough to have a great variety of wildlife rich sites to choose from, and this year, I have been in the privileged position of introducing families and wildlife enthusiasts alike to the RSPB's Fen Drayton Lakes nature reserve, found between Cambridge and Huntingdon.

This complex of lakes and traditional riverside meadows next to the River Great Ouse used to be gravel workings until the RSPB transformed it into a wildlife haven in 2007. It is a fantastic place to explore in summer and autumn, when a walk around the lakes will treat you to sights of birds such as terns, hobbies, and kingfishers. You will spot an abundance of dragonflies creating glittering streamers as they flit above the water, which is home to secretive otters and an enthralling variety of bugs and beasts.

One of the things I love about a nature reserve like Fen Drayton Lakes is the diverse way in which people use and enjoy the space. Some come from the surrounding villages to walk their dogs and take in a breath of fresh air; others visit on their own to commune with nature, and enjoy the peace and solitude that a site this size can offer.

The one thing that has particularly struck me over the last few months is the enjoyment that families get from visiting. The sight of excited children returning from an afternoon's pond dipping, buzzing with excitement and keen to show their parents new creatures discovered in the murky depths of the lakes really sums up to me why places like this are so important for connecting young people with nature.

It is not just children and families that can benefit from wild, watery spaces. On regular guided walks held at the reserve, visitors are amazed at the variety of birds, insects and wild flowers that they encounter.

As well as regular guided walks during the year, the RSPB offer activities including bug hunting and pond dipping. You can even try your hand at willow weaving using material harvested on site.

Or why not visit the reserve, where experienced staff are often on hand to give advice on wildlife friendly gardening as well as nature and bird watching. Take some inspiration from the work the RSPB has done at Fen Drayton Lakes, and then see if you can create your very own wildlife haven in your back garden!

Author: Pete Stroud, Visitor Officer, RSPB Fen Drayton Lakes



Gardening Service

Most of us want to live independently in our own homes for as long as possible. As we get older, we may need support and assistance to enable us to do so.

The Gardening Service is provided with people in later life in mind and therefore offers people over 60 who have difficulty doing their gardens, the support of friendly and responsible individuals, passionate about providing a professional service that enables people to remain living within the comfort of their own home.

All of our Gardeners are DBS checked, carry photo ID cards and have undergone an extensive induction process. As well as carrying out gardening tasks our staff also provide regular company and keep a friendly eye out for clients. We can also signpost clients, carers and family members to other services offered by Age UK Cambridgeshire.

Our team also consists of office based staff to ensure that a friendly helpful voice is always at the end of the telephone if you have any questions or comments regarding your gardening service.

Gardening Tasks include:

- Cutting lawns
- Pruning low trees and trimming hedges
- Strimming and edging
- Cutting back shrubs
- Planting
- Rubbish clearance (within reason)

You will be matched with a suitable gardener and agree a mutually convenient day and time for the visit(s) to take place. You must be at home when the visits take place and they can be arranged from 1 hour upwards (depending upon availability). This is a very competitively priced service at £12.50 per hour.

We want you to be pleased with the service we provide and we therefore monitor our quality standards to ensure we are satisfying the high expectations of the people we help. We care what you think and your feedback will be used to improve and develop this new service

Contacting us:

For further information, about availability please contact us on 01354 696650 or email suzanne.cameron@ageukcambridgeshire.org.uk

Job vacancies: We would also invite anyone interested in becoming a gardener to contact us on the above telephone number.

Over Day Centre,
1 Drings Close,
Over,
Cambridge
CB24 5NZ
Tel: 01954 231807
Email: can@overdaycentre.org.uk
Or marybaron47@hotmail.com

OVER DAY CENTRE NEWSLETTER

AugSept 2014



If you have a question about the Day Centre please contact Mary or Sarah by letter or email and we will try to include information in forthcoming newsletters.

Raffle

Willingham WI have donated this beautiful quilt to raffle. Each square has been stitched by a WI member and sewn together to make the quilt. Sarah in the office is selling raffle tickets at £1 each until the Xmas Fayre when the winning ticket will be drawn.



The trip to Hunstanton was a very enjoyable day and where else would a fish and chip lunch taste as good!



Recently the Day Centre bus has been taking the elderly in the village, including ODC clients, to have a home cooked lunch at the Methodist Church Hall on the 4th Saturday of every month. This has worked very well and benefits the whole community. Even more reason to aim for a new bus in this 25th anniversary year.
CAN WE DO IT? YES WE CAN! (With a little help from our friends)



Our **BUSOMETER** still stands at just over £25,000! There is fundraising going on all the time and when this is added we will let everyone know as soon as we can.



Dates for your diary
The Day Centre celebrates being open 25 years in September. If you have had any connection with the Day Centre over the years we would love to hear your stories and memories.

1st October Harvest Fayre
An afternoon to buy cakes, preserves, pies and much more...not forgetting raffle tickets for the quilt.

Register of Charity
No: 800829



Cambridgeshire Celebrates Age in Swavesey

A free afternoon of entertainment has been arranged by Age UK Cambridgeshire as part of Cambridgeshire Celebrates Age.

The event for older people will be held at the Compass Rooms, Bethel Baptist Church in Swavesey on **Friday 17th October** from 2.30 – 4pm.

Easy listening musical entertainment will be followed by afternoon tea. Please do come along to support this fun afternoon. Free transport to the event can be arranged.

For more information about the afternoon or to book a place at the event, please call Age UK Cambridgeshire on 01354 696650.

Rosie in Stitches Bar Hill Community Market on 4th October



"With your help, we are making the Rosie a more comfortable environment for mothers and babies.

If you have any spare polyester toy stuffing or yarn we are in urgent need of your donation.

Follow us on the Rosie in Stitches facebook page.
New knitted clothes and toys for sale on our website
www.rosieinstitches.org.uk

Doctors Surgeries

Swavesey Surgery

(01954) 230202

Out of hours 0330 123 9131

Over Surgery

(01954) 231550

Out of hours 0330 123 9131

Longstanton

(01954) 207600

Out of hours 111

Bar Hill Surgery

(01954) 780442

Out of hours (01954) 780442 -
call will automatically be diverted

Fenstanton

7E High Street, Fenstanton
01480 461873

Out of hours 01480 461873.
call will automatically be diverted

See our website at www.swavesey.org.uk for the full surgery news letters. Ed

Flu Campaign

The following information was copied from the Over Surgery newsletter.

Flu jabs will be offered at all Surgeries for those listed below and should also be available to patients over 65 and carers etc.

Do you have one of these chronic conditions?

- *respiratory disease (including Asthma that requires continuous or repeated use of inhaler)*
- *heart disease*
- *renal disease*
- *liver disease*
- *neurological disease*
- *diabetes*
- *immunosuppression*

If you fall into one of these groups and caught flu, the consequences would be much more severe for you, so please call the surgery for an appointment for your jab. We have early morning appointments so you can do this on the way to work...



**The Library is now
Located at the front of
Village College. Please
support us in our new
location**

Thank you to all who supported us at the Swavesey Festival. We sold many books and the children who visited our stall made delightful and exciting bookmarks.

We also had a successful visit to Over carnival.

If you are a member of the County Library service you can borrow all our books. You can order books and other material for collection at our Library. You and all your family can also join the library with us and borrow up to 12 books each! And remember - it's all Free!!

Opening hours are now

Tuesday	15.30 to 17.30
Wednesday	18.00 to 20.00
Thursday	18.00 to 20.00

And the first Saturday in every month 10am to 12noon

Your Library Committee can be contacted through:

Richard Hart	202707	Sarah Hellon	230960
Jacqui Fuller	230774	John Pook	230978
Sue Jones	230650	Doug and Lorraine Hunt	232478

We always welcome volunteers to help man the Library so please join us and keep your library alive!!!

SCHOOLS INFORMATION

Swavesey Village College – new build update

Following the appointment of contractors the new build programme at Swavesey Village College, which will include the redevelopment of Drama, Design and Enterprise, Dining and a new Sports Hall is due to start with demolition of the existing Gym and drama studio in August. Clearly this will have an impact on community groups that use the facilities at the College during 2014-2015 but in the long term we should be able to offer far better facilities for all school and community users as a result.

This development represents a significant investment in the infrastructure of the college. As well as providing the capacity to accommodate the growth in the number of children living in the college catchment area, this development will also enable us to better accommodate the existing student population at the college.

Whilst this is a fantastic opportunity in the long term it does present some interesting short term challenges. We appreciate your support in managing this period of development and change as effectively as possible in the following ways:

- Ensuring that the Fen Drayton road entrance is used to pick up and drop off students at 8:30 and 3:10. This will now be lit and have a footpath installed as part of the works.
- Parking considerately and using the Fen Drayton Road Car Park and Bus Park after 4:30 if visiting for parents' evenings or using the sports centre.
- Using the front car park for access only to the Scout Hut and Squash club.
- We still strongly urge drivers not to park on Gibraltar Lane or drive into the crowded front car park at end of school. This presents a real danger to children on foot and bicycles, as well as disturbing local residents. Please support the college and local police by helping to keep our children safe.

The plans for the development are below. This is currently the first phase, with a second phase involving the rehousing of the English department planned for later in the year.

This is an exciting time for all members of the college community and for students especially as they begin to shape the social and dining spaces for coming years which will predominantly form part of the new build. Unfortunately, the Government and County Council Grants do not include any funding for fixtures and fittings in the new build so the focus of the sponsored walk in September, other fund raising and money raised from the 5 years' time concert will go towards the equipping of social and dining provision for students, that they will lead on the development of.

We have spoken to Mr Bacon's Family and they are very happy for this new build to be developed in his memory and we will be working with all members of the college community to look at the most fitting way to do this.

Andy Daly - Principal


The Rheebridge Open Art Exhibition at SVC

This November Swavesey Village College will throw open its doors and welcome art lovers from across the region. The Rheebridge Open Art Exhibition will be held at the college's outstanding auditorium space from **21st to 23rd November**.


Adult entries will compete for accolades including the Top Twenty, Rheebridge Awards, and a People's Choice Award. There will be a free draw to vote for your favourite artwork – which you could win – and the chance to do a bit of Christmas shopping with paintings, sculptures, prints and cards available.

There is no selection procedure for the main exhibition so if you're an artist and would like to exhibit just make sure you apply early to secure a space. At the exhibition South Cambridgeshire District Council are endorsing a new Cambridgeshire Area Young Artist Competition (CAYAC), which will showcase and recognise budding artists from local secondary schools. Students under the age of 16 will enter the competition through their school's art department.

Andrew Daly, Principal of Swavesey Village College, said: 'Our students will be involved in all aspects of the event so this is a fantastic and unique opportunity for them to work alongside and learn from professionals.' On the Saturday, Jeremy Newton, Chief Executive of The Prince's Foundation for Children and the Arts, will present the student prizes and the CAYAC shield to the winning school at a teatime reception.



APRIL BURGESS MARTIN SCHOOL OF BALLET
(PRINCIPAL: APRIL MARTIN ASSOC ARBTA)



Ballet classes at Over Primary School

Thursday afternoons for age 3+ - 16+
Please contact April Martin for information

**Qualified experienced teacher Associate of ARBTA,
Member BDQT (CRB checked).**

Contact 01954 200533 tutusrus@ntlworld.com



**Free Workshops for All the Family
Saturday 18.11.14**

- Henna Painting 09.30-10.00
- Indian Folk Dancing 10.00-11.00
- Indian Sweet Making 11.00-12.00
- Intro to Stained Glass 10.00-12.00
- Patchwork for Fun 11.00-12.00
- Para Fun 10.00-10.45
- Para Fun 11.15-12.00
- Potato Printing 10.00-11.00
- Whizz Bang Science Workshop 10.00-11.00 & 11.00-12.00

Booking Essential

**Are you a ...Guitarist? Bass player?
Drummer? Singer? Keyboard player?**



**Rock School
Needs You!**

From 11am-12noon on Saturday mornings at Swavesey Village College, come and be part of the SMS ROCK SCHOOL

Form bands with other musicians, learn to play your favourite songs, write songs yourselves and perform at regular rock concerts.

Whether you are just starting to play or are already a rock legend, you'll fit right in at Rock School.

To find out more visit us at www.swaveseyms.co.uk



Looking for a lively and creative approach to music for pre-school children?

Swavesey Music School offers a class with a comprehensive range of musical activities: singing, rhythm games, percussion, listening, performing, moving to music; led by an early-years' specialist.

'Kate's Kindy' is on Saturdays at 9 – 9.40am at Swavesey Village College

Want to know more?

Contact Kate Woolf (01954 200975) or visit the website www.swaveseyms.co.uk

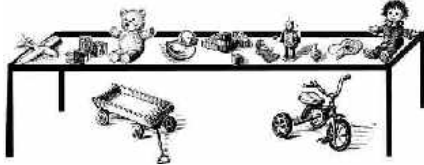




The Parish and Priory Church of St Andrew, Swavesey

Table Top TOY SALE

With Refreshments too!



Saturday 8th November
in
St Andrew's Church,
Swavesey
From 2pm till 4pm

Do you have toys to sell?
Tables must be booked in advance.
Please contact Caroline Stevens;

Email: caroline@overroad.co.uk or Tel: 01954 231433



BATS



Baby And Toddler Services are informal services held on the second Monday of each month at 10:30am on the carpet at the back of St Andrew's church on Station Road, Swavesey.

All ages are welcome, but especially pre-school children and their parents and carers. Please join in with us for a story, songs, prayer, craft, drink and a biscuit, and a chance to chat with others.

When the second Monday occurs in the school holidays, please bring your school age children too.

If you would like to know more, then contact Caroline Stevens, by phone: 01954 231433 or email her at: caroline@overroad.co.uk

Forthcoming BATS

We continue the theme "People who knew Jesus"

Monday 13th Oct 2014 – A soldier and a servant

Monday 10th Nov 2014 – A man at work



CHURCH OF THE SACRED HEART
19 Needingworth Road, St Ives

Parish Priest: Father Edward Tredota
Assistant Priest: Father Marek Pabis

Tel: 01480 462192
www.sacredheart-st-ives.org
email: office@sacredheart-stives.org

Mass Times
Saturday 17.00 (Anticipatory)
Sunday 08.00 and 11.00

We also have a large hall available for hire.
Please contact the parish office for details.

The Parish and Priory Church of St Andrew, Swavesey

October and November Diary

Saturday 4th October – 2.00pm-4.00pm

Teddy Bear Parachute Jump

Sunday 5th October Sixteenth Sunday after Trinity

11.00am Parish Communion

6.30pm Evensong

Monday 6th October

11.30am Holy Communion
in the Community Room at Thistle Green

Sunday 12th October Seventeenth Sunday after Trinity

8.15am Holy Communion

11.00am Parish Communion

Monday 13th October

10.30am Baby And Toddler Service (BATS)

Sunday 19th October Eighteenth Sunday after Trinity

8.15am Holy Communion

11.00am Parish Communion

7.00pm Sunday Sanctuary at Bethel Baptist Church

Sunday 26th October Bible Sunday

8.15am Holy Communion

11.00am Family Service with Holy Communion

Sunday 2nd November All Saints' Sunday

11.00am Parish Communion

6.30pm Evensong

Monday 3rd November

11.30am Holy Communion
in the Community Room at Thistle Green

Saturday 8th November

St Andrew's Table-top Toy Sale

St Andrew's Church, Swavesey
2.00pm-4.00pm

Sunday 9th November Remembrance Sunday

8.15am Holy Communion

10.50am Act of Remembrance
followed by **Parish Communion**

Monday 10th November

10.30am Baby And Toddler Service (BATS)

Sunday 16th November Second Sunday before Advent

8.15am Holy Communion

11.00am Parish Communion

7.00pm Sunday Sanctuary at St Andrew's, Swavesey

Sunday 23rd November Christ the King

8.15am Holy Communion

11.00am Family Service with Holy Communion

Sunday 30th November First Sunday of Advent

8.15am Holy Communion

11.00am Parish Communion

Saturday 13th December 10.00am-5.00pm

Sunday 14th December 2.00pm-5.00pm

St Andrew's Christmas Tree Festival

To arrange weddings, baptisms, services of thanksgiving for the gift of a child, etc., please contact 01954 231903 or www.honeyhill.org




BETHEL 175

In 2015 we will be celebrating our 175th anniversary

We hope that you will be able to join us in this celebration. Perhaps you have memories, or even photograph about events connected to the history of Bethel that you would like to share with us!

Contact us:
minister@bethelbaptistchurch.org.uk or
 Join us on facebook www.facebook.com/bethel175
 to keep in touch with what is happening

COMPASS YOUTH CAFE

A drop-in session from 6:30pm - 9:00pm for anyone between 11-16 years old. Come and go as you like!

Music, X-box games on the big screen, laptops, drinks & snacks.
 FREE internet access!




LIVELY SUNDAY SERVICE
ALL WELCOME
 Something for ALL the family!
 10.45 am each week with Activities for children 0-16 years

First Sunday in the Month—Church around the coffee table!
 Why not come and try it?

MONDAY NIGHT CLUBS

Explorers, Adventurers and Survivors
 Fun and Games for Children in Keystages 1, 2 and 3 every Monday night during term-time.

Come and Join us at 6:00pm for an hour of fun activities as we learn about the Christian faith through stories, music and discussions.
 (Survivors meet at 7:00pm)

For more information on weekly events:
 Please feel free to contact David Mann, our minister at minister@bethelbaptistchurch.org.uk or 01954230458
www.bethelbaptistchurch.org.uk

PARISH AND COUNTY NEWS

From Your DC - Sue Ellington

Well, Summer is nearly over and Christmas approaches – where does the time go. But we keep moving projects forward and improving the services available, community spirit and infrastructure in Swavesey.

There has been concern voiced about the fact that if the new homes in School Lane have a “right to buy” clause they may not be fulfilling the principle of providing homes for local people into the future. I have talked with the SCDC Portfolio holder for Housing, Mark Howell, and he has agreed that if it is legally possible he will not include that option. I am sure by the time you read this a solution will have been developed.

The flooding in the village was awful for those affected and although it was a freak storm with 105mm of rain falling in 2 hours, we need to take action to avoid flooding whenever and wherever possible. Of course there are several agencies which have responsibilities in relation to water courses, drains, and sewage but I know that councillors at Parish, District and County levels are working to keep Swavesey free of further flooding.

It is good to see the mobile warden scheme in the village is growing. I am involved in looking at the older persons procurement contract for Cambridgeshire. This contract will take effect next April and be responsible for ensuring the provision of all health care for all elderly people. There are currently 3 bidders but the decision will be announced in September as to which one will have the contract. Inevitably this will involve changes but we need to make sure these will provide the best care for the majority of the residents. I foresee there will be many more meetings before April to satisfy ourselves that we have done all we can.

As always you can contact me on 01954202923 or by email Cllr.Ellington@scams.gov.uk
Sue Ellington

Changes to Waste and Recycling Services

New collection rounds from 1st September

The collection day will stay exactly the same however collection times may change so we're asking residents to put their bins out the night before collection or by 6am on collection day.

Monthly green bin collections in the winter

Monthly green bin collections will be introduced this winter, in December, January and February only, when far less garden waste is put out by residents.

The changes will be highlighted to residents in a number of ways, through articles in the South Cambridgeshire Magazine, parish and village magazines, a press release, posters and leaflets.

October Bulletin from Cambridgeshire Fire and Rescue Service

WINTER is coming and after seeing a rise in chimney fires last year, Cambridgeshire Fire and Rescue Service is encouraging all residents to get their chimney professionally swept before the cold sets in.

Top tips to enjoy an open fire safely:

- Sweep your chimney at least once a year and get brickwork inspected, especially the chimney breast and roof space.
- Do not bank fires too high or overload the grate, and remember to let them burn down well and check the hearth before going to bed.
- Use a fire or spark guard to prevent accidental fires.
- Do not place objects on or over the mantle-piece which may cause you to stand too close to the fire to reach or use them.
- Burn only suitable fuels and avoid burning resinous woods as soot builds up quickly.

Above all, ensure you have a working smoke alarm fitted on each floor or your home. To find out if you are eligible for a free home fire safety check, call 0800 917 99 94.

Like our fan page on Facebook: www.facebook.com/cambsfrs, follow us on Twitter @cambsfrs and Instagram.

Scrap Metal Dealers

Many of you will have seen and also heard a white pick up going round Swavesey asking for scrap metal. Please do not put anything out for them there is no need to do so. We have a scrap metal dealer in Swavesey Albie Smith who lives along the drove that leads from Market Street up towards Longstanton. he will collect from you if it is a large item or you can take small items to him. If you need contact details ask Linda Miller the parish clerk.

We need to discourage the itinerant dealers from calling round and the best way to do this is not to give them a reason to come in the first place.

The Parish Council organise collection of electrical goods see this issue for the next one, and some of the money raised from this goes back into the village funds which in turn helps village organisations.

SWAVESEY PARISH

Parish Council News July/August 2014

Water Main, Cow Fen Drove, Hale Road

The PC raised concerns with Cambridge Water Company about the state of the mains in the above areas. The main is due for renewal and updating in 2016/2017. A further section of main between Boxworth End and Whitton Close will also be replaced.

County Council

The Cycle Path to Buckingham Business Park is now nearing completion. Final details are being agreed and the official opening is being planned for Tuesday 2nd September. The PC is to bid for local highway improvement monies to set a 40mph speed limit from the village to Buckingham to improve safety for pedestrians and cyclists using the new path.

Streetlight replacement: A representative of Balfour Beatty attended the August meeting of the PC to address concerns about individual lights and to update on progress. The scheme is still subject to delays resulting from connections to the main supply cables, work should be completed by the end of the year.

The Cambridge Future Transport study is likely to result in buses linking Boxworth and Elsworth to the guided bus running through Boxworth End at peak morning and evening times.

Flooding following the recent very heavy rain was discussed. It appears to have been made worse by badly maintained road drains and associated pipes. The PC is pressing the County Council to ensure the drains are clear and fully maintained in future.

There are continuing discussions with the County Council about extending the parking area at the Guided Busway stop, to include for short term parking.

District Council

The exception site housing in Fen Drayton Road is now to be built by SCDC, for rental properties. The PC is concerned that the exception site housing should not subject to a right to buy by tenants and will be available for local people needing housing in the long term. To this end they are making strong representations to the District Council.

Concern was expressed over a recent planning appeal decision allowing development in Waterbeach outside of the village development boundary, as this could result in similar applications in Swavesey (and other villages) until the new Local Plan is adopted.

COUNCIL NEWS

The PC agreed to submit an expression of interest to SCDC to take on the grounds maintenance of the sheltered housing area in Thistle Green.

Neighbourhood Watch and Police Business

The Council received reports from our NHW coordinator.

The PC discussed speeding in the village and in Market Street, noise nuisance and considered ways to ameliorate the problems.

Speedwatch

A residents volunteer scheme to help monitor and raise awareness of speeding. Any residents interested in forming a Speedwatch group and being trained to carry out speed checks, should contact the Parish Council for further information.

Drainage

The Council continues to press for action on a number of drainage concerns with the Environment Agency, in particular the work necessary to the drain across Mare Fen. It was agreed to press for the original design for the works that were subject to planning approval as part of the Northstowe and Cambourne 950 developments.

Village Matters

A substantial grant has been awarded to the PC from WREN for the play area in Moat Way and this will allow a further grant to be sought to meet the cost of the project.

The PC agreed to grant a sum of £100 to assist with craft materials for the Care Network Social Circle Group who meet in the community room at Thistle Green. They work alongside our Community Care Warden.

The PC is in discussion with the Community Pavilion Trust concerning support for ongoing maintenance costs.

Various work to trees on community land were agreed to maintain safety.

Planning

The PC considered and commented on a number of planning applications.



Council Agendas, Minutes and current issues can all be found on the Parish Council webpage at www.swavesey.org.uk

Swavesey Parish Council

Parish Councillors	Telephone	E-mail address
	(01954)	
Martin Johnston (Chairman)	200605	martin.johnston1@ntlworld.com
John Pook (Vice-Chairman)	230978	pookjhn@aol.com
Lisa Boyes	232603	windmillkennels@oneservice.co.uk
James Dodson	230560	jamesdodson.highfieldfarm@virgin.net
Stuart Faben	07887 906982	stuart@fabenjoinery.com
John Jullien	202251	john.jullien@ntlworld.com
Hannah Parish	231375	hannah.parish@niab.com
Colin Parsons	230861	trinitvengineering@skv.com
Sandie Smith	232356	cambridgegills@hotmail.co.uk
Keith Wilderspin	230083	keith.wilderspin@btinternet.com
Warren Wright	232470	
Clerk		
Linda Miller	202982	clerk@swavesey.org.uk
District Councillor		
Sue Ellington	202923	sue.ellington@virgin.net
County Councillor		
Mandy Smith	230248	mandysmith1235@btinternet.com
Papworth & Swavesey Ward		
Memorial Hall Administrator		
Nicole Mullee	07963 861791	memorialhall@swavesey.org.uk

Cambridge Past Present & Future

We are a small charity run by local people who are passionate about keeping Cambridge and the neighbouring villages and countryside special. We work hard to ensure that the future growth of Cambridge and its surroundings is of the highest quality to enhance the city's character, ambience and reputation.

- We manage a number of green open spaces and historic buildings for enjoyment by everybody
- We deliver a packed programme of educational, cultural and recreational events for people of all ages
- We seek to give a voice to local people on local planning and development issues.

Our new website is at:
<http://www.cambridgeppf.org/>

Cambridgeshire Family History Society Fair October 25

Have you ever thought about researching your family history? At the Cambridgeshire Family History Society Fair on 25 October, we can help!

With the eleventh series of Who Do You Think You Are? airing on our screens this summer, family history has never been more popular.

Expert advice will be on hand at the Cambridgeshire Family History Society Fair on 25 October. Speakers will teach you how to find your Cambridgeshire ancestors and then show you how you can turn your research into an interesting story for your family and friends. In this very special 100th anniversary year since the start of the First World War and 70th year since D-Day, you will also hear about the Imperial War Museum Duxford's collection of Second World War images as well as learning how to date old photographs from looking at clues given in pictures.

Exhibitors from family and local history societies will be attending, as well as organisations offering everything that you need to help you with your research. Whether your ancestors are from Cambridgeshire, or beyond, experienced Family History Society volunteers will be available for one-to-one sessions to give advice about getting started and what to do if you get stuck. There will also be free access to the main genealogy providers' websites throughout the day. Share ideas and practical tips with your fellow family historians and, for a small charge, there will be soup and a roll for lunch while you chat!

The fair is taking place at Girton Glebe School, Girton. Doors open 10am-4pm. Parking and entry is free (£2 to attend each talk). The Citi 6 bus stops outside the school.

See www.cfhs.org.uk or <http://on.fb.me/UdrbZ8> for further details or contact Lisa Newman, cambsfhs@hotmail.co.uk.

Trading Standards - Stepping Stone

The Stepping Stones project supports disabled people aged 14-25 to access sports activities in Cambridgeshire. This can be as a participant, coach, official or volunteer. All you need to do is call and we will do the research and match you with a local provider. We provide the necessary support to the club to enable you to participate, and can help access funding to engage you in the activities.

Eligibility:- Disabled people aged 14-25

Referral:- Young people can self-refer

Costs:- Club membership fees

Telephone: 01223 301756

Email: steppingstone@cambridgeshire.gov.uk

Grants up to £2,000 for community heritage projects available from OWLP scheme



Do you have an idea for a community heritage project in your local area? Why not apply for our Community Heritage Fund?

The Ouse Washes Landscape Partnership scheme (OWLP), funded through a grant from the Heritage Lottery Fund, aims to promote the unique heritage of the OWLP area stretching from Downham Market in Norfolk to St. Ives in Cambridgeshire and get local people involved in doing so.

Grants are now available for between £500 and £2,000 each for community groups, organisations or individuals to help look after, learn about, extend the understanding of and to celebrate the unique landscape and hidden heritage of the Ouse Washes LP area. Projects should have clear public benefits, support the OWLP scheme's objectives, and provide at least some input into one of the partnership's main events, the Ouse Washes Festival Fortnight planned for late July 2015 and 2016.

Project ideas could, for instance, include the creation of a new circular walk or village information panel, a one-day community event focusing on the culture or natural heritage of your area, a project to bring an area's heritage to life via an oral history project or by giving walks-and-talks, heritage skills training or passing on land-based management skills to others. A wide range of other activities could certainly also qualify for a grant; if you have an idea, please ask us for some feedback.

The first deadlines for applications are 20 August and 30 November 2014, with more rounds in 2015. For more details, including information on how to apply and to download a form and guidance, see <http://ousewasheslps.wordpress.com/downloads/>

To find out more about the OWLP scheme, the partnership's aims and how you can get involved, have a look at our news blog, <http://ousewasheslps.wordpress.com/>, our Twitter account, <https://twitter.com/ousewasheslp> or our new website, www.ousewashes.org.uk; or contact the OWLP Programme Manager at mark.nokkert@camsacre.org.uk or on 01353 865030.



Safe+Well™ is a service run by NRS Healthcare and supported by Cambridgeshire County Council.

We're here to help people who wish to buy their own **daily living aids** – these are products designed to help you if you're finding some everyday tasks difficult.

Whether you're getting older, have recently been in hospital, have a disability or are finding everyday tasks difficult.

We're here to HELP

We can help you choose the right daily living aids, suggest places you can buy them, and let you know where you can try them out locally. Visit the website or contact us for more information

www.safeandwell.co.uk/cambridgeshire

Tel: 01480 415719

Email: enquiries@safeandwell.co.uk



Beware of copycat websites

Trading Standards Officers at Cambridgeshire County Council are urging residents to beware of copycat websites imitating official government services online. These are designed to trick you into parting with your cash unnecessarily by charging for services that are provided cheaper or for free through official government channels.

Ordering new passports, booking driving tests and renewing car tax discs are just some of the ways that people are unwittingly being left out-of-pocket by shrewd fraudsters who operate 'copycat' websites.

Copycat websites tend to use similar design features to replicate the 'look and feel' of official service websites and often use URLs that include fragments such as 'govuk', 'directgov' or relevant organisation names to make them appear as official providers of certain services.

The best way you can avoid being duped is:

- Use GOV.UK (www.gov.uk) It is the easiest and most secure place to find government services and information online
- Instead of searching for the services you need via a search engine, go to GOV.UK and use the search function there. Then you'll know you're on the official site
- If you do use a search engine, look out for the differences between natural search results and paid-for search results.

National Trading Standards is issuing advice for consumers to beat the cyber con-artists, including a video guide at <http://www.tradingstandardscrime.org.uk/copycat-web-site-crackdown-2/>

To report a misleading or copycat website, you can call the Citizens Advice consumer service on 03454 04 05 06.

Residents are reminded to check ID

We'd like to remind our residents to be vigilant and always check the identification of anyone who calls at their door including those who say they are from Cambridgeshire County Council or Trading Standards. Council officers will usually ring and make an appointment first if they intend to call on someone. Council Officers always carry identification and will not be offended if you close the door on them whilst you verify who they are.

You can call the County Council on 0345 045 5200 to check that they are a County Council Officer. Always leave the chain on the door when you are answering to someone you do not know, take any identification card and examine it thoroughly. Never employ tradesmen who call at your house uninvited.

Independent Living Fund (ILF) closure, June 2015

The Independent Living Fund (ILF) aims to support long term, independent living for severely disabled people by helping them to live at home instead of in residential care.

In March 2014, the Government announced that the ILF will be closing on 30th June 2015 when the County Council will take over responsibility for meeting the eligible care and support needs of ILF users. The County Council and ILF are working closely together to make sure the transfer of responsibility for funding arrangements takes place as smoothly as possible.

The ILF website www.dwp.gov.uk/ilf includes more information about the programme's closure, or you can phone the County Council's Customer Services on 0345 045 5202 with any questions.

The ILF is no longer accepting any new applications.

Community Groups & Charities	
Cam Sight	Cam Sight is a local charity which offers support to anyone with a visual impairment, along with their family and carers. We meet on the 4th Wednesday afternoon of each month in Bar Hill. For more information please telephone Joan in Bar Hill on 01954 200622 or Alison at Cam Sight on 01223 420033 or email alison@camsight.org.uk . For more info see: www.camsight.org.uk
CAMTAD	CAMTAD is a charity that helps people with hearing loss. Volunteers service NHS hearing aids and provide batteries and they attend Swavesey quarterly at Thistle Green. Advice on any aspects of hearing loss is available at a hearing help session or by calling the office on 01223 416141, e-mail gadmin@camtadcamb.org.uk or check the website www.camtadcamb.org.uk .
Care Network	Care Network supports volunteers, encourages independence and develops good neighbour projects. We provide the Welcome Home from Hospital service across Cambridgeshire. Contact:- Care Network, 5 Broadway House, 149-151 St Neots Rd, Hardwick, Cambridge, CB23 7QJ (tel: 01954 211919).
Community First Responder Scheme	The local group in Over and Swavesey has provided help over many hours and attended over 20 patients in your community. You can support the group and help to fundraise for equipment or volunteer to become a Community First Responder within your community. Contact:- responderadmin@eastamb.nhs.uk or call 01284 731802
Hearing Dogs for Deaf People	Hearing Dogs for Deaf People is a national charity and centre of excellence in training dogs to alert deaf people to important sounds and danger signals in the home, work place and public buildings. Contact:- Jenny Parker (Branch Organiser and Speaker) 01223 833562 (evenings only). jennifer.parker5@btopenworld.com
The Friends of the Rosie Hospital	The Friends of the Rosie Hospital are helping to make the Rosie a more comfortable environment for mothers and babies. Contact - Mrs Mary Sanders (Hon Chair) rosieinstitches@ukonline.co.uk Tel 01223 356615
East Anglia's Children's Hospice (EACH)	Put your free time to good use and volunteer at East Anglia's Children's Hospice (EACH) in Milton. Volunteering at a children's hospice doesn't always mean care work and fundraising as there are also tasks such as admin and maintenance of the grounds. Contact:- Clare Bates on 01223 815 134, email clare.bates@each.org.uk
Community Resourcing	We have a small group of local volunteers (local residents from our community) who would like to help other members of our community with any practical tasks. Contact:- Parish Council Tel: 01954 202982 or Email: clerk@swavesey.org.uk
Help the Heroes	We support those wounded in the service of our country. Contact:- 01480 478526
OWLS Community Car Scheme	Run by CRB checked volunteers the scheme offers a door-to-door service, for medical or some social journeys, to people who are unable to access other forms of transport. Ring 07505 254363 to book a journey, find out more, or to volunteer as a driver
Swavesey Village College Community Education	Evening courses in a variety of subjects and day workshops. Contact:- Adult Education, Swavesey Village College, Gibraltar Lane, Swavesey, Cambs, CB24 4RS. Telephone: 01954 230373 E-mail: community@swaveseyvc.co.uk Website: www.swaveseyvc.co.uk

CLUB INFORMATION

Allotments in Swavesey	Down Hale Road towards the windmill and on the right there are 61 plots, mostly 150 sq yds (125 m ²) in area, backed up by eight water tanks. Large yields of a wide range of high quality vegetable, fruit and flower crops can be grown successfully. If you are interested in joining the waiting list contact Selwyn Richardson on 01954 202974.
Bell Ringers	Practice night Tuesdays, 7.30-9.00pm at St Andrew's Church. New ringers of all ages welcome. Contact Tower Captain Andrew Stevens on (01954 231433) for details. Email: steplekeper@ely.anglican.org Website: http://www.ely.anglican.org/bells/ely/swavesey.htm
British Legion	For information contact:- Chairman Gordon Hilton-Jackson (01954) 230606 or Secretary Angela Dye (01954) 230484
Fenland Squash Club	If you are interested in playing squash at Swavesey Village College then contact Geoff Green on (01954 231000) Website: www.fenlandssquash.org.uk
British Tang Soo Do Institute	British Tang Soo Do Institute practices the Korean martial art of Tang Soo Do. Our club training covers self defence techniques and many aspects of fitness including flexibility, coordination, conditioning, balance and discipline helping to promote a healthy lifestyle. Our clubs welcome mixed abilities of all ages. After school clubs are held for Infants (3.45pm to 4.15pm) and Juniors (4.15pm to 5.15pm) on Tuesdays at the Memorial Hall, Swavesey; and Infants (3.45pm to 4.15pm) and Juniors (4.15pm to 5.15pm) on Thursdays at Fen Drayton Village Hall. Evening classes for all ages are held on Monday 6.30-8pm at Cambridge Regional College Sports Hall, Wednesday 6.30-8pm at Fen Drayton Village Hall, and Friday 6.30-8pm at Fen Drayton Primary School. For further information please contact Master Jeff Cockram on 07863 345681 or jeff@btsdi.co.uk Website: www.btsdi.com
Over District Rainbows, Brownies & Guides	Over Rainbows: Monday & Tuesday, 5.30pm-6.30pm, Over Primary School - Over Brownies: Wednesday, 6.00pm-7.30pm, Thursday 5.30-7.00pm, Over Church Hall - Over Guides: Tuesday, 7.00pm-9.00pm, Over Church Hall - District Commissioner Jeanette Fenn 01954 232283 jeanette.fenn@hotmail.co.uk
1st Swavesey Brownies	Meet 6:00pm - 7:30pm in the Swavesey Memorial Hall every Monday. We are always looking for new girls and parent helpers. Please contact Catherine Groves (Brown Owl) tel. (01954 202648) or mobile 07969 815198 if you are interested in participating.

Swavesey Badminton Club	Located at the Swavesey Village College Sports Centre. The Club offers a high standard of play at club nights on Tuesdays 7pm to 8pm and on Fridays from 6.30pm to 9.30pm. We play competitive badminton in the Cambridge leagues and run men's, women's and mixed teams, as well as vets (over 40s) and when possible junior teams. - Contact Helen Taylor on 01954 230997 Email: yes.helen@gmail.com - website: http://www.swaveseybadminton.net/	Swavesey & Over Conservation Society	Autumn/Winter meetings on the second Wednesday in the month at Over Town Hall at 7.30pm starting Wednesday September 14th 2011. Contact- Frances Parish: 01480 498301 or Pat Miles: (01954) 780485
Swavesey Billiards and Snooker Club	For information/membership please contact Graeme Waites (01954 230113)	Swavesey & Over Tennis Club	Club night 1 October to 1 April is on Monday, 7.30pm. From 1 April – 30 September there will be club nights on both Mondays and Fridays. We welcome new members from anywhere in the locality. Further information from John Graham john.graham@sotennis.co.uk or website http://swaveseyandovertennisclub.btcc.co.uk/
Swavesey Camera Club	Meet every Thursday, 7.30-9.30pm, Lecture Room, SVC. Non-members welcome (£4.00 charge). For further details ring Peter Looper (01954) 202461	Swavesey RADsoc	Friendly local drama group staging two or three productions a year. New members always welcome. Contact: Chris Avery (01954) 781233. Visit our website at www.swaveseyradsoc.org.uk .
Swavesey Community Choir	If you enjoy singing and having fun then come and join Swavesey Community Choir. We meet every Wednesday in term time in St. Cecilia's Hall at SVC, from 7.30pm - 9pm. You don't need to be able to read music and no auditions needed, tenor and bass voices particularly welcome. For further details contact Chrissie Richardson 07881 824095. Website: www.swaveseycommunitychoir.co.uk	Swavesey Ramblers	Meet last Sunday of every month 10.00am in the Market Street for 5-6 mile walk. Tel 230650 for more information
1st Swavesey Cub Pack	The Cubs meet at the Scout Hut every Tuesday during term time from 6.30pm - 7.30pm Leader Lynda Mayer 01954 204768	1st Swavesey Guides	We meet from 6:30pm to 8pm in Bethel Baptist Church Hall every Thursday during term time. For more details please contact Claire Hagger chhagger@gmail.com .
Swavesey District Bridleway Association	A liaison group representing local horse riders whose main aim is to protect existing and create safe new horse riding links between all local villages. New members welcome. Regular Newsletter/Social events calendar. Please contact Sue Rogers (01954) 232758	1st Swavesey Sea Scouts	The Scout Group meets every Friday during term time at the Scout Hut on the SVC site (between the youth centre and the squash courts) from 7.30pm. Scout Leader is Andrew Batey; contact: scouts@onthemeridian.org.uk
Swavesey & District History Society	Meet every third Tuesday in the month, 7.30pm, Lecture Room, SVC. Contact Carolyn Redmayne, Secretary (01954) 230037	Swavesey Spartans	For information or player enquires please contact- Chairman - James Tait Tel: 01954 232183 Secretary - David Radderham Tel: 01954 203258 swaveseyspartanssec@gmail.com Child Welfare Officer- Teresa Sarkar Tel: 01954 231079 Website- http://www.swaveseyspartansfc.co.uk or find us on Facebook
Swavesey Five-a-Side Football Club	Meet each Wednesday evening at 7pm until 8pm in the Sports Hall at SVC. Anyone interested should contact Stewart Smith on (01954) 200068 or s2art50@lycos.co.uk	Swavesey Tang Soo Do Club	Classes are held Monday 18:30-20:00 in the main hall at the Primary School, Swavesey and Wednesday 18:30-20:00 in the Memorial Hall. We are a family run club offering Martial Arts training in a friendly atmosphere. Training is available for all ages from 5 and over. Children, adult beginners, family groups and people with previous martial arts experience are all welcome. Contact Louise Morton on 07763 103286 Email: enquiries@swaveseytsd.co.uk - website: http://www.swaveseytsd.co.uk/
Swavesey Institute Football Club	New players always welcome, please contact Phil Baines on 01954 200377 [Saturday sides] or Jerry Ladell on (01954) 201018 [Veterans side].	Swavesey W.I.	We meet every second Monday of the month at 7.30pm in the Memorial Hall. New members are always welcome to enjoy a variety of invited speakers and have a chat and cup of tea/coffee afterwards. For further information contact Margaret Springer (01954) 232442.
Swavesey Kids Club	Swavesey Kids Club provides craft/play activities and care for children before and after school, in a friendly and secure environment. Breakfast Club – meets from 7.30am in the Primary School Hall, with breakfast available until 8.15am. After School Club meets 3.15pm-6.00pm weekdays in term time at Swavesey Primary School. For information about either club please contact Carol Panther (manager) 0780381 2221	Great Ouse Trefoil Guild	The Great Ouse Trefoil Guild is a Year Old on March 8th. We are part of the Guide movement but you do not have had to be involved to join. We have lots of good events lined up for the rest of year. Including a picnic and punting evening, a ghost walk and BBQ. Plus lots other talks and craft evening. We meet on the 2nd Tuesday of every month. For further details either phone 01954 781381 or email arrowsmith.wendy@hotmail.co.uk
Linedance	Linedance classes held on Wednesday mornings at the Bethel Baptist Chapel 9-30 to 11-30am and Fridays at the Memorial Hall 7-15 to 9-15pm. All levels welcome, from absolute beginners to intermediates. Contact Deborah Walker 01954231382 email deborah.walker105@talktalk.net	Swavesey Music School	Meets every Saturday of term time at Swavesey Village College Only £3.00 per session. For further details contact: Audrey Caldwell: acaldwell.chk@swaveseyvc.co.uk

MAGAZINE ADVERTISING RATES

ADVERTISING RATES AS FROM JANUARY 2010.

For a one year inclusion i.e. six issues.

Size	Advertiser	Magazine
Full page	£176	£250
Half page	£88	£130
Quarter page	£55	£80

The following rates are for one inclusion only and as a premium rate is already charged will be positioned in the magazine section

Half page one inclusion only £75

A small charge may be made for creating and amending artwork

For all advertising details please contact:

Rob Wills Tel: 01954 232947 or Email:adverts@swavesey.org.uk

EXTRA MAGAZINES

Send a Meridian Magazine subscription to your favourite Auntie, or to a friend who has recently left the village.

Six issues (one year) costs only £9.00.

Send a cheque (made out to 'The Meridian Magazine') and the address of the recipient, to: Jan Waller, Meridian Subscriptions, 35 Carters Way, Swavesey, Cambridge, CB4 5RZ

NOTIFICATION OF MAJOR EVENTS

Please use this form to notify us of any major events you are organising so that we can publish the dates in the magazine and on the website at www.swaveseymeridian.co.uk. It is hoped this will avoid major events clashing on the same day. Please send to the Editor, 14 Black Horse Lane, Swavesey.

Event _____

Location _____ Date _____ Time _____

Contact Name _____ Tel No. _____

BIRTHDAYS, ANNIVERSARIES & SPECIAL OCCASIONS

If you would like to mark any occasion that is special to you or somebody that you know by announcing it in this magazine, please fill in the form below.

Also supply your name and contact details, and return to the Editor by the copy date. We will endeavour to include it in our next issue.

SHORT MESSAGE:



USEFUL TELEPHONE NUMBERS & WEB SITES		
Doctor's Surgery (Swavesey)	01954-230202	
Doctor's Surgery (Over)	01954-231550	
Police:		www.cambs.police.uk
Emergency	999	
All Non Emergency Calls	101	
Swavesey Neighbourhood Watch	01954 230083	www.swavesey.org.uk/nhw
Swavesey Pre-school Enquires	01954 273312	preschool@swavesey.cambs.sch.uk
Swavesey Primary School	01954-273312	www.swavesey.cambs.sch.uk/
Swavesey Village College:	01954-230366	www.swaveseyvc.co.uk
Community Office	01954-230373	
Swavesey Post Office	01954-230201	
Cambridgeshire County Council:		www.cambridgeshire.gov.uk
General Enquiries	0345 045 5200	
Library Service	0345 045 5225	www.cambridgeshire.gov.uk/leisure/libraries
South Cambs District Council	0345 045 0500	www.scambs.gov.uk
Electricity (UK Power Networks): Emergencies	0800-7838838	www.ukpowemetworks.co.uk
Gas Emergencies (National Grid)	0800-111999	www.nationalgrid.com/uk/gas
Water (Cambridge Water Company):	01223-706050	www.cambridge-water.co.uk
Sewage (Anglia Water) Emergency	08457 145145	www.anglianwater.co.uk
Environment Agency (Flood Line):	0845 988 1188	www.environment-agency.gov.uk
Incident Reporting Line (pollution etc)	0800 807060	
Samaritans	08457-909090	www.samaritans.org.uk
Addenbrooke's Hospital:		www.addenbrookes.org.uk
Accident & Emergency	01223-217118	
General	01223-245151	
Hinchingbrooke Hospital	01480-416416	www.hinchingbrooke.nhs.uk
NHS Direct	0845 4647	www.nhsdirect.nhs.uk
Airports + Road & Rail:		
Gatwick	0844 3351802	www.gatwickairport.com
Heathrow	0844 3351801	www.heathrowairport.com
Luton	01582-405100	www.london-luton.co.uk
Stansted	0844 3351803	www.stanstedairport.com
Traveline (Bus Coach & Rail)	08706-082608	www.traveline.org.uk
Transport Direct (Coach, Rail, Flight)		www.transportdirect.info
Local Timetables:		
Cambridgeshire CC Bus Information		www.cambridgeshire.gov.uk/transport
Stagecoach	01223-423578	www.stagecoachbus.com
National Express Coaches	0871 7818178	www.nationalexpress.com
Whippet Coaches	01954-230011	www.go-whippet.co.uk
National Rail	08457-484950	www.nationalrail.co.uk
Veterinary Practices:		
Village Vet (Longstanton)	01954-780027	www.villagevet.co.uk
Ash Croft (Hardwick)	01954-210250	www.ashcroftvet.co.uk

Intentionally left blank

Teddy Bear Parachute Jump

**From St Andrew's
Church Tower**

Saturday 4th October

2pm -4pm

Is your Teddy brave enough!

£1 per Teddy

Certificate for all teddies

**Refreshments served in church
during the afternoon**

**Not got a teddy,
or your teddy isn't brave enough?**

Come along and watch the fun!



Swavesey RADSOC presents



**Season's
Greetings**
by
Alan Ayckbourn

Thursday 16 October to Saturday 18 October 2014

7:30 pm at the Swavesey Venue

Adults £8.00 Concessions £6.50

Tickets available from www.swaveseyradsoc.org.uk

or phone 07504 552 870

A booking fee of £1 per total transaction is added to online bookings
Season's Greetings is presented by special arrangement with SAMUEL FRENCH, LTD
Swavesey Venue is at Swavesey Village College, Gibraltar Lane, Swavesey CB24 5RS