

THE MERIDIAN SWAVESEY

A large, dense tree in full bloom with numerous pink flowers, set against a green lawn and a cloudy sky. The tree's branches are heavily laden with clusters of small, light pink blossoms, creating a thick canopy of color. The ground is a well-maintained green lawn, and the sky above is a pale, overcast blue.

No. 183 April/May 2020

The Meridian Meander

CHALLENGE EVENT

Sunday 10th May 2020

Fancy the challenge of a long distance walk or run whilst helping to raise funds for a local older persons charity?

Join us for one of the Meridian Meander circular routes of 18 or 26 miles in length!

Both routes follow the valley of the River Great Ouse, passing through historic St Ives and its picturesque surrounding villages.

Registration opens at 8.00am and closes at 9.00am at The Over Day Centre.

Free light refreshments will be provided at checkpoints on the route. Finish at Over Community Centre for a certificate and free piece of cake!

Detailed route instructions will be sent in advance by email. Entry is £15 per person (under 18s must be accompanied by an adult)

Book online at www.ventries.co.uk

Closing date 6th May. **NO ENTRY ON DAY**

All proceeds go to Over Day Centre!

Any questions? please contact

Allison Box: amsdjb@yahoo.co.uk

Event kindly supported by

Nick Uttridge Building and Groundworks

and Ash Croft Veterinary Practice

The Over Day Centre

1 Dings Close, Over, Cambs CB24 9JZ

Registered Charity No. 80629

Cancelled

The Five Pub Challenge

2020 edition!

Sunday 10th May

Meet at Over Day Centre for bacon rolls, tea, coffee, and 10.30am start, then a 12.5 mile walk through the beautiful Cambridgeshire fens to The Pike & Eel, then The Ferry Boat (for free soup and a roll), and on to The Three Turns (free cone of chips if you get there before 2.30pm), The White Horse (free choc ice to cool you down) and The Admiral Vernon for free homemade cake & Finisher's certificate.

£10 entry fee in advance, or £12 entry on the day from 9.30am. Register by downloading a form from www.overdaycentre.co.uk or telephoning 01954 231807.

Certificates for all finishers.

Under 18s are welcome but must be accompanied by a responsible adult. The length of the route may make it unsuitable for younger children.

Event kindly supported by Nick Uttridge Building and Groundworks and Ash Croft Veterinary Practice

All proceeds go to Over Day Centre!

The Over Day Centre

1 Dings Close, Over, Cambs CB24 9JZ

Registered Charity No. 80629

EDITORIAL

A packed issue this time with details of Festival Events- yes it is earlier than in previous years but hopefully the weather will be kind! So many events happening it is hard to know where to start- If you have green fingers then go and visit the Open Gardens and see what others have achieved; or maybe growing your own is your aim? Visit the allotments.

There is entertainment for all ages on offer and how about entering the village show? Show off those baking skills or maybe crafts. A lot of planning and hard work goes into the Swavesey Festival so come and support it.

We welcome your contributions to The Meridian sometimes it may take a little while to actually put them into print as we have to prioritise time limited events but rest assured we will use them- so please be patient. 500 words maximum please- less if there is a photograph.

Posters - we try to put as many of these in as we can but can only have 3 in colour in the magazine the rest will be black and white however on the website they will be colour.

DEADLINE FOR THE JUNE/JULY ISSUE IS 20 APRIL.

Editor

Cover Image - Spring Blossom by Edwin Parish

Inside Front Cover - 5 Pub Challenge & Meander Walks

Inside Back Cover - Ballet Poster

Back Cover - Festival Poster

IN THIS ISSUE ...

Editorial	page 1
Meridian Committee	page 2
Major Events List	page 2
Dates for your diary and forthcoming events	page 3
Posters	page 4-8
Club Reports	page 9-20
Miscellany	page 21-32
Medical News	page 33
School Information	page 34-39
Parish and County news	page 40-44
Churches	page 45-49
Community Groups & Charities table	page 50
Club Information	page 51-53
Advertiser	page 54-78
Extra Magazines, Major Events & Birthday forms	page 78-79
Useful Telephone Numbers	page 80

MERIDIAN COMMITTEE

Editor:	April Martin	Tel: 01954 200533
Treasurer	David Gedny	Tel: 01954 231305
Production:	Alan Morris	Tel: 01954 202664
Advertising:	David Gedny/Selwyn Richardson	Tel: 01954 231305 / 07902 240061
Distribution	Selwyn Richardson	Tel: 01954 202974
Subscriptions	Jan Waller	Tel: 01954 230795
Complaints	Maureen Hadfield	Tel: 01954 230414
Proofreading	Alison Lucas	Tel: 01954 232984
Website:	Alan Morris www.swaveseymeridian.org.uk	Tel: 01954 202664
Emails:	editor@swaveseymeridian.org.uk	
	advert@swaveseymeridian.org.uk	
	webmaster@swaveseymeridian.org.uk	

Major Events List

This list is intended to avoid major events clashing on the same day. It will only work if we are advised of all such events, so please let us know as soon as you can confirm the details.

A form is available at the back of this magazine. We will list them in this section of the Magazine and also on our website at www.swaveseymeridian.org.uk

Saturday 4 April	Thistle Green Community	Easter Eggstravaganza 11am-3.30pm at Thistle Green Community Room in aid of Crohn's and Colitis charity.
Saturday 25 April	Swavesey Camera Club	Annual Photographic Exhibition 10am to 5pm in Swavesey Memorial Hall
Sunday 3 May	White Horse	Barrel Rolling starts 11am in Market Street
Friday 8 May	Swavesey Windmill	VE Day 2pm at the windmill - Daisy Brookes 40s Singer Cottenham Brass Band. Tickets £15. Under 14, £6
Sunday 10 May	Over Day Centre	5 Pub Challenge & Meridian Meander - Start from the Over Day Centre
Saturday 16 May	Swavesey Festival	1920's Jazz Night - 7.30pm at Swavesey Windmill. Entertainment and Live Music. Tickets £20 from 01954 232247
Saturday 16 May	April Burgess Martin School of Ballet	A Triple Bill - Classical Symphony, Façade & Gaîté Parisienne 3.15pm & 7.30pm at Swavesey VC
Saturday 6 June	Swavesey Festival	Swavesey Festival - Start of a week of festivities
Saturday 13 June	Swavesey Festival	Swavesey Festival Grand Finale and Gala Day
Saturday 1 August	St Andrew's Church	Theatre production: The Three Musketeers
Saturday 19 Sep	St Andrew's Church	Eco Fair
Saturday 28 Nov	St Andrew's Church	Advent Craft Fayre
Friday 4 December	St Andrew's Church	Theatre Production: The Snow Queen



DATES FOR YOUR DIARY



April		
Saturday 4	Thistle Green Community	Easter Eggstravaganza 11am-3.30pm at Thistle Green Community Room in aid of Crohn's and Colitis charity.
Saturday 25	Swavesey Camera Club	Annual Photographic Exhibition 10am to 5pm in Swavesey Memorial Hall
Thursday 30	White Horse	Start of May Fest until May 3
May		
Sunday 3	White Horse	Barrel Rolling starts 11am in Market Street
Friday 8	Swavesey Windmill	VE Day 2pm at the windmill - Childrens Games - Daisy Brookes 40s Singer - Cottenham Brass Band. Tickets £15 Under 14, £6
Sunday 10	Over Day Centre	5 Pub Challenge & Meridian Meander - Start from the Over Day Centre
Saturday 16	Swavesey Festival	1920's Jazz Night - 7.30pm at Swavesey Windmill. Entertainment and Live Music. Tickets £20 from 01954 232247
Saturday 16	April Burgess Martin School of Ballet	A Triple Bill - Classical Symphony, Façade & Gaîté Parisienne 3.15pm & 7.30pm at Swavesey Village College
Sunday 17	St Andrew's Church	Ding Dong Bell - 2.30pm - 5.30pm. Bell ringing demonstration, Illustrated Talk, Bell Tower Tours etc.
June		
Saturday 6	Swavesey Festival	Swavesey Festival - Start of a week of festivities

Cancelled



1920's Jazz Night

SATURDAY 16TH MAY 2020 ARRIVAL 7.30PM
VENUE: SWAVESEY WINDMILL

LIGHT SUPPER,
ENTERTAINMENT & LIVE MUSIC
FROM JOHN PETERS'
ROARING 20'S SHOW
TICKETS £20.00

CALL LISA ON
01954 232247
FOR TICKETS

EASTER EGG EGGSTRAVAGANZA

Cancelled



THISTLE GREEN COMMUNITY ROOM
SWAVESEY

SATURDAY 4TH APRIL

11.00 AM – 3.30 PM

PROCEEDS TO COLITIS AND CROHNS
VARIOUS STALLS FOR ALL AGES

EGG HUNT

CHOCOLATE TOMBOLA, REFRESHMENTS

For more information or to Book Table/s contact Sally Unwin, 01954 230200

59 Thistle Green, Swavesey.

St Andrew's Church, Swavesey



Ding Dong Bell!

Sunday, 17th May, 2:30 - 5:30pm

- 🔔 Bell ringing demonstration by Over and Swavesey Bellringers
- 🔔 Illustrated talk about the history of the Swavesey bells by John Shepperson BEM
- 🔔 Bell tower tours (over 18's only and suitable footwear, please)
- 🔔 Refreshments and Children's area

Free Entry but tickets for talk and for tower tours available in advance from:
jacqui_fuller@hotmail.com

Swavesey Community Warden Scheme

Support for independent living
Regular contact gives peace of mind
Extra support during times of need

Some examples of how the warden can help you:

- a listening ear
- making drinks and light meals
- watering plants
- feeding pets
- getting small items of shopping
 - collecting prescriptions
 - information and guidance

There is a small fee for the service which can be on a temporary or permanent basis according to need.

To contact the Community Warden
Call 07436 102 736

Age UK Cambridgeshire, 2 Victoria Street, Chatteris
Cambridgeshire PE16 6AP



Swavesey Camera Club

One of the leading clubs in East Anglia



Annual Photographic Exhibition

Our Annual Exhibition, an established event in the Swavesey year, is our opportunity to demonstrate our skills to the public. Participation by all members is encouraged and there will be displays of prints, projected images and AV presentations. Greetings cards will be on sale with all the proceeds going to Arthur Rank Hospice Charity. Tea, coffee and cakes will also be available. Exhibition entry is free.

Each year we host an Open Photographic Competition within our Annual Exhibition. Our aim is to encourage photography amongst everyone in the local community. The Competition is open to all amateur photographers. Prizes will be awarded in three categories; junior school age, senior school age and adults.

Saturday 25th April 2020

Open from 10am to 5pm

Memorial Hall, High St.

Swavesey, CB24 4QU

Cancelled

Further details can be found on our website:
www.swaveseycameraclub.co.uk

CLUB REPORTS

We take it on the chin and move on

This phrase uttered by every football manager whose team has just suffered a heavy defeat applied to Hale Road allotment site following storms Ciara and Dennis.

The site is in quite a windy location so inevitably there was damage; the worst of which was a polytunnel completely uprooted and flown through the air onto a neighbouring shed. Only wish I'd been there to watch and film it. A few fruit cages and crop protectors were leaning or completely collapsed, a shed door had been ripped off and some lids blown off the water tanks but being metal they didn't go far. These are all things that can be quickly rectified and fortunately the sheds on site had only superficial damage unlike a storm shortly after the site was opened when several sheds were blown over. Allotment holders learnt their lesson from that occasion and sheds are now more secure. The main problem with these storms is the amount of rain associated with them. The heavy wet soil is not conducive to good digging and during March and April plot holders will have been champing at the bit to get onto the ground and start the planting cycle.

However this will all be rectified and the site will be in pristine condition for the Festival Gardens Open Day. This will take place on the first weekend of the festival on the **6th and 7th June**. In addition to various open gardens in the village, open community orchard and open windmill between 1 and 5pm the allotment site will be also open. We also aim to have a produce and plant stall on the site. The earliness of the event this year means the selection of fruit and vegetables available will be limited but we are aiming to have a range of flower, fruit and vegetable plants available. Do come and visit us as you pass by to visit the windmill it is all included in the open gardens passport

The following Saturday June 13th is the produce and craft show which is being organised by the Allotment association on behalf of the Festival committee. Already work has begun by the steering group and details of the show are listed elsewhere.

Finally if you fancy joining us and clearing up a site after a storm get your name down on the waiting list.

Swavesey Festival 100 Club

Three winners each month receive £60 or £30 or £15.
To take part in this popular competition phone
Gill Hurst 01954 200470. Latest winners are;



	£	January 2020	February 2020
First prize	60	Sally Unwin	Jane Christian
Second prize	30	Ena Keerie	Pat O'Neill
Third prize	15	Helena Rees	Martin Dobinson



TO LET – OFFICE - 183 sq m (1,979 sq ft)

Stable Block
20 Market Street
Swavesey
Cambridge
CB24 4QG

- Well-presented, open plan office with period features
- Central village location close to local amenities
- 30 minute drive to Cambridge and 10 minute walk to guided busway
- 10 car parking spaces



00223 213666 Cambridge Commercial, Clifton House, 1-2 Clifton Road, Cambridge, CB1 7EA cheffins.co.uk

ALAN'S CARPETS

Carpets and Vinyl Supplied and Fitted

We have been in the carpet trade for over 40 Years and have a spacious showroom in Swavesey

Opening Times:
Monday to Friday 10am-2pm
Saturday 10am-1pm

Home Selection Service by appointment in and outside opening hours
Phone 07790 544250

Alan Shrimpton
Showroom
1-3 Station Road, Swavesey CB24 4QJ
Tel: 01954 232298

CHIMNEY SWEEP

J. L. Wight

City & Guilds Qualified

Advice given / Problems solved



Certificates issued

Fully Insured



HETAS registered

01954 253315
www.camsweep.co.uk
26 Cow Lane, Rampton



SWAVESEY CEMETERY

Allotments available

Easy work Mains water available

Enquiries to the secretary :- Austin Day
E-mail :- austinday@hotmail.co.uk
Tel :- 01954 230050
Mob :- 07545 208288

What *will* happen to your family and estate after you die?

Assist Law has over 50 years' experience in delivering high quality legal services.

Services very popular with our clients:

- Estate planning review: What *will* be left?
- Mitigating the cost of care fees
- Mitigating against Inheritance Tax
- Lasting Power of Attorney to protect vulnerable family members

For a no-obligation conversation, contact Estate Planner, Ed Bristow
Telephone or text: 07786061457
or email: edwinbristow@assistlaw.co.uk



Limited SPECIAL OFFER: £79 per Will
Normally £135!

Ensuring certainty of service to its members' clients

R. A. Miller
Plumbing and Domestic Heating

Fenside, 71 Wilingham Road, Over Cambridge CB24 5PE
Tel: 01954 203277 Mob: 07831 853885
Email: robert.miller@ntlworld.com

All plumbing work undertaken

- » New boiler replacement and installation with free quotation.
- » GAS boiler and GAS fire servicing Landlord Certificates.
- » Heating problems - Diagnosis and rectification.
- » General plumbing - taps, washers, pipework, showers, etc.
- » Full and partial Bathroom installation work.

For a reliable and professional service

Robert Miller MCIPHE RP



Office 01954 203 277
Mobile 07831 853 885



RADSOC Pantomime

On 17/18/19 January In Swavesey Village College RADSOC presented "Adventures in Pantoland" directed by Matt Isham of Moat Way. Our reporter went along on the first night and was entertained by a very polished performance. The theatre was packed and over the three days 440 people attended the show. The appreciative audience applauded rapturously throughout. The confidence of the actors showed in the continuity of the action with no gaps while someone waits for their cue. The whole thing flowed smoothly and at pace from beginning to end and whereas there must have been some nervousness among the cast they certainly didn't show it, and all performed with enthusiasm all the way through. There was a large cast of about twenty three including a group of naughty little gremlins who caused trouble.

A normal pantomime has 3 or 4 leading performers but instead of being a specific pantomime this was a fast-moving and wide-ranging hybrid based in Pantoland and included Mother Goose, Wishee Washee, Grizelda, Dick Whittington, Alice, Cinderella, Prince Charming, The Dark Lord, Puss in Boots, Dave and others. Furthermore, instead of having one resident Dame, (Mother Goose), the little gremlins began to change some of the other characters into yet more Dames and things got a bit confusing for the residents of Pantoland.

Pantomimes are always colourful of course but this one had a kaleidoscope of colour with nearly all of the cast in a Technicolour range of colourful costumes which must have taken numerous days to make. Furthermore, the makeup was very professionally done and stood out as colourful without being gaudy.

The final minutes saw a very happy cast showing that they had enjoyed performing, with everyone on stage enthusiastically singing and the delighted audience readily increasing the merriment.

Swavesey Revue & Drama Society is a local award-winning amateur dramatics group which usually puts on at least two shows a year - a pantomime in January and often a play in the spring or autumn. Find them on Facebook or at www.swaveseyradsoc.org.uk to see details of their next performances. There are always opportunities to act or direct, but they would also love to hear from anyone who would like to design and build sets, help to make costumes, work backstage or in the technical department etc.

HAPPY 1ST BIRTHDAY SWAVESEY SPEAKERS

The club celebrated its 1st birthday back in February with plenty of cake and is going strong! Most of our members live in or in the villages around Swavesey so it's a great way of getting to know more people in your local area. Our members have now collectively completed over 60 speeches on topics ranging from their first jobs to the importance of your music listening experience and provided great feedback on these to help the speakers improve.

In Toastmasters clubs you follow a self-paced learning programme called Pathways which is designed to increase your confidence and skills when speaking to an audience. There are 11 of these projects or 'Paths'; some focus on planning and leadership skills, others on presentation mastery and humorous speaking. We have a range of speaking experience in the club from new members who joined the club the meeting before to people who have been in Toastmasters for many years (the latter are helping to support the club).

You can access the first speech, the Ice Breaker, free of charge from the Toastmasters International website (<https://bit.ly/2SZdgGv>) if you'd like to get a taster of what is involved. The meetings have a structure to them to make sure we can fit all the speeches in and meetings are managed via our club website (link below). We also put any information about other Toastmasters events on the website on the club calendar.

Feel free to drop in and we always welcome guests warmly! There are three meetings this year where the Memorial Hall is not available (21 April, 2 June and 3 November) and we will be at the White Horse Inn on Market Street in Swavesey (same start time). We encourage people to try a meeting out to ensure the club is right for them and there is plenty of support from other members to help you achieve your goals. We have a break during each meeting so you can chat with the members and we provide refreshments; usually tea, coffee and CHOCOLATE BISCUITS!!!

Swavesey Speakers are a Toastmasters International (www.toastmasters.org) club that meets every 1st and 3rd Tuesday of the month. If that day and time doesn't suit you, we have another club nearby - Huntingdonshire Speakers - that meets on the 1st and 3rd Wednesday of each month at 6.30pm (for 7pm start) at The Golden Lion Hotel in St. Ives. There are also clubs in Cambridge and Peterborough and beyond, check here to find them: <https://www.toastmasters.org/find-a-club>.

If you are interested in Swavesey Speakers or Huntingdonshire Speakers, contact Faye on 07908 443610, swaveseyspeakers@gmail.com or visit www.swaveseyspeakers.toastmastersclubs.org.

We are also on Facebook and Instagram if you want more information and to see photos of our meetings: <https://bit.ly/37FzHpu>.

WI News

Dates for your diary:-

13 April will be a debate about issues which concern the W.I. nationally i.e. the slave trade in Britain, mental health issues, and possibly car crash male dummies but not female shaped ones. The government is lobbied on issues which concern us.

11 May will be a speaker. A good chance to sit back, learn something and be entertained.

Swavesey W.I. is your women's institute set up originally for country women to enjoy interests and education. We have friendly meetings on the 2nd Monday every month in the memorial Hall from 7.30 to about 9.30 pm. Also, we have groups e.g. book club, dining-out, walking, darts and, of course Compass café on the 2nd Thursday each month. Why not come and meet some of us at the cafe? A cup of tea or fresh coffee for £1 and a slice of homemade cake, also £1. Plus good company. Plus free drinks for children and lots of toys to play with.

Just to give you a taste of our meetings these are the write-ups of recent meetings:-

Our regifting auction in January was a huge success – great fun and almost like present swapping since no-one paid a huge amount. However, we raised well over a £100 which we can use for various things and donate to charity.

In February we had a talk by Geoff Lambert about walking the canals. Very interesting. Geoff raises money for the 'Medical Detection Dogs' which he has talked to us about in the past. Another good example of our enjoying an evening and raising money for charity.

WE NEED PARENTS TO STEP FORWARD TO JOIN THE COMMITTEE TO HELP US HELP US RUN SWAVESEY SPARTANS.

Spartans is the biggest club in Swavesey with hundreds of players, parents and Grandparents enjoying either playing or watching local football.

As another season draws to a close and in line with our constitution we are looking to change some key members of our committee as they complete the three years of service

Gary Peet our Chairman will finish his extra year in charge and we need a new Chairperson.

Our Secretary Colin Baker has completed his three years in the post and we urgently need a replacement.

Our Safeguarding children officer Carolyn Merricks is also coming towards the end of her term in the post.

We owe all committee members a massive vote of thanks, but particularly Colin and Carolyn who have helped the club develop into the local football hub it has become.

By the time you read this we will be into the last quarter of the season, hopefully, all of our 19 girls, Ladies and boys teams will have enjoyed the season whatever the results.

Gary Peet Chairman



BECOME A
TUTOR!

Tutors needed: All subjects and ages
Tutor Doctor Cambridge
01223 430432
www.tutordocor.co.uk/cambridge

CHIROPODIST/ PODIATRIST

I can offer a professional service
in your own home.

For further details please ring
01954 201256

Biomechanical assessments &
orthotic therapy also available.

Michelle Dolan
HCPC Registered Chiropodist/Podiatrist
CH34864

e-mail: michelledolan@outlook.com

NOW OPEN in the Village of Over...
Dog Day Care... with a difference

Opening Hours
Monday to Friday
7:30am - 6pm

Find us on
facebook

Unit 17
Norman Way
Over CB24 5QE
07764 959238

PUPPY CLASSES - 6 WEEK COURSES
SPACES ALWAYS AVAILABLE.

Norman's



Take a look at what we all get up to each day or
our **FACEBOOK PAGE...** search for
'Norman's Dog Day Care'

Swavesey & District History Society

January meeting. Over 50 members attended to hear Prof John Robb, Dept of Archaeology, tell us about the people of Medieval Cambridge. The period spanned about 1200 to 1500 A.D. with the black plague about halfway through. He noted that whereas the lives of the aristocracy are well documented, ordinary people of the time are historically invisible apart from occasional mentions in tax records or court cases. However, the study of skeletons can give us a biography of bodily experience. Skeletons have been studied from All Saints Church, a poor area near the castle, and from St John's Hospital which is under St John's College and from the Augustinian Friary adjacent to Bene't Street, an affluent area. Many skeletons have been investigated by a widely experienced team and detailed information on most is available, particularly on the type of food they ate, and the type of work they did along with their health and experience of pain throughout their lives. Examples are:-

All Saints PSN 709. A female child who lived between 1000 and 1365 and who had died at about 3 to 4 years. Her diet was poor and there were several general indicators of childhood infectious diseases.

St John's PSN 356. A man who lived to about 45-50 years in the 13th century. He had bad teeth and gout but had a fairly enriched diet throughout his life. For some reason he was buried face down.

St John's PSN 335. A female who lived in around 1200 to 1275 and died aged 45 to 60. She had blue eyes, good teeth, osteoarthritis and multiple bone fracture events along with a life-changing hip fracture.

Augustinian Friars PSN 525. A female who died in about 1500 to 1530 aged 60 plus. Of above average stature who had had an enriched diet. She was probably part of the elite.

February meeting. Over 30 members braved the February cold to listen to a talk on 'Shopping through the Centuries' given by Hannah Vandridge, the Learning and Outreach Officer of the Norris Museum in St. Ives. The talk made particular reference to St. Ives. Several related artefacts from the Museum were passed around to illustrate the talk. Shopping in St. Ives really began with the granting of a 'Fair Charter' by King Henry in 1110 which allowed for an eight-day fair in the town. This became a weekly market from 1200 to the present day. A sheep market and a bullock market were held in the town from those times. During the 14th and 15th centuries proper shops were developed as craftsmen opened their front rooms and served from a counter on to the street, with undercover shopping developing later in the 15th century. The coming of the railway in 1847 provided easier access to the town with a daily market in cattle, sheep and pigs being established. Two yearly fairs were held in the 19th century, on the 11th October and Whit Monday. The 1871 Bank Holiday Act gave people more time for shopping and souvenirs began to be a real thing in St. Ives. Shops established in the 19th century in St. Ives are still there today, although in a different location. The rise of department stores, refreshment rooms and advertising also formed part of the talk. Shopping during the present day has changed from the early 20th century when food shopping had to be done daily. More leisure time and a rising standard of living led to more shopping, but now shops are closing because of different ways of buying goods, although Beauty Shops, Ice cream shops and Bookshops are apparently on the increase.

The Norris Museum in St. Ives is on the Waits and has increased in size over the last few years to incorporate more display space and a new room for educational purposes. For opening times see their website.

Next Meetings -

17 March. Singing milkmaids. Ken Sneath.

21 April. The history of Marshall's airport. Terry Holloway.

19 May. The Inns and Outs of pub names. Mark Pardoe.

EVERYONE WELCOME

Once again we are looking forward to our Annual Exhibition which will be held in Swavesey Memorial Hall on Saturday, 25th April. We hope to see all our friends there, enjoying the photographs, and also our homemade cakes while watching the Audio-visual show in the small room at the rear. As usual we will have our popular card sale in aid of a deserving charity; we know many of you stock up with these, especially if they feature local scenes.

It is not too late for you to take an active part in the show by entering our Open Competition; final date for entries 13th April. There are the usual three categories: Primary School, Junior School and Adult. Not only will the winning entries be displayed as part of our exhibition, but the Adult winner will be given free membership of our club for the 2020/21 session, and the younger winners will receive £25 each.

Send in your entries as jpeg files, by e-mail, with your name, titles and category to: swaveseycompetitions@gmail.com

Earlier in the year, when we had those huge storms, we were forced to cancel some outside visits. At least, on 23rd April, we can see photos from all this year's previous club outings, often Candid Camera shots of our own members to everyone's great amusement. With luck, we will be able to enjoy our seaside day trip to Cromer planned for May 5th. Our last outing of the year will be on 24th May, to Peterborough, where there will be plenty to interest us, including the Cathedral.

We still have a few competitions left. On 2nd April we entertain St Ives for a friendly local derby, On 30th April we have our Pairs Competition, when our more experienced members each take someone from the 'improvers' group into partnership, to produce images for a joint entry. After that we can choose our 'Image of the Year', a real feather in one's cap to win this, especially as it will be printed on next year's membership cards.

Then there will be just a few club nights before we break for the summer: the AGM on 4th June and the Annual Dinner and Prize-giving on June 11th.

If you enjoyed our exhibition why not come along to our Welcome Evening in September when you can meet us all again.

Mo Hadfield
Swavesey Camera Club
www.swaveseycameraclub.co.uk



LIBRARY NEWS:

We had a glorious Christmas party thanks to all who came. Now we are looking forward to our Easter Event on April 4th at 10 am and the Festival June 9th 4 pm for Story Time and fun at the Library.

We have free Wifi access to computers, a wide range of books for all ages. Come and join us. We have regular story times for young children. Look out for our posters We continue to welcome donations of good quality books for our shelves or to sell to meet our running costs. Come and join us at the Village College

If you are a member of the County Library service you can borrow all our books. You can order books and other material for collection at our Library. You and all your family can also join the library with us and borrow up to 12 books each! And remember - it's all Free!!

.....
Opening hours are now

Tuesday 15.30 to 17.30
 Wednesday 18.00 to 20.00
 Thursday 18.00 to 20.00

And the first and third Saturday in every month 10am to 12noon

Your Library Committee can be contacted through:			
Richard Hart	202707		
Jacqui Fuller	230774	Sarah Hellon	230960
John Pook	230978	Doug and Lorraine Hunt	232478

We always welcome volunteers to help man the Library so please join us and keep your library alive!!!

Can you help us ?

Swavesey library would like to hear from anyone who would be willing to help run the library.

If you enjoy reading books, have basic computer skills, are keen to promote reading with our younger readers, then why not volunteer to help out at our fantastic village library.

All we ask for is a couple of hours of your time once or twice a month.

Swavesey library is your local community library, run by volunteers. It's based in the Old Entrance Hall at Swavesey Village College, holds a great stock of books for all ages, and with its links to Cambridgeshire County Council library service, can provide most of the facilities found in the larger libraries, right on your door step.

As well as providing books for loan or sale, some of our recent activities have included a children's reading challenge, activity mornings, story times and a local author reading extracts from their latest book.

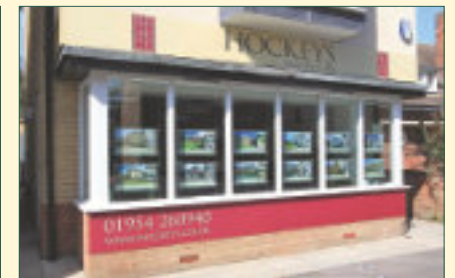
If you are able to assist we would be keen to hear from you. Just pop in to the library and speak to one of our volunteers , or contact Richard Hart on 01954 202707 or Richard94.hart@virgin.net



Thinking of a move? We are happy to offer you a free, no obligation valuation of your property.



Call our Cambridge office for a free valuation
(01223) 356054



Call our Willingham office for a free valuation
(01954) 260940

An update from Fen Drayton Lakes

Our year on the reserve is split into two halves: the autumn-winter habitat management season and the spring-summer breeding season.

From September through to the end of February we are busy going around the reserve carrying out work to maintain or enhance areas for our key breeding species. Most of this work is guided by the reserve species targets in our management plan. These targets detail the species, avian or otherwise, that we want to attract to the reserve to breed or overwinter. Nesting islands are cleared of vegetation, willow is removed from reedbed, scrub is coppiced and many other tasks are carried out to provide the ideal habitats for our target species.

March through to August is the breeding season when resident and migrant birds are busy nesting around the reserve. Consequently, throughout these months we do not venture off-track into any of the habitats, in order to prevent disturbance to breeding birds. We do, however, carry out surveys to find the number of pairs of key species using the site, so we know if what we're doing is working. Starting in early spring we head to the reserve, usually at or before dawn, to look or listen out for the species being surveyed that day. For some surveys we listen out for territorial males; such as bittern, turtle dove and nightingale. In other surveys we count pairs of birds on nests or with chicks; such as terns, waders and waterfowl. All of our findings go towards our local reserve targets to inform our work for the next habitat management season and also get collated on a county and country level.

Get involved....

Wednesday Wander

Ever thought you'd like to know more about the reserve and its wildlife? Informal volunteer-led guided walks take place on the second Wednesday of every month. There's no need to book and it only costs £3 for members and £4 for others. Meet at the main car park, leaving at 10:15am.

Volunteering

It's always nice to be met with a friendly face when arriving at the reserve and be offered information and family-friendly activities, such as pond dipping and minibeast hunting. If you'd like to find out about our visitor engagement work and other volunteering opportunities, please get in touch.

Email: fendraytonlakes@rspb.org.uk

Phone: 01954 233260



Lapwing with chick - Amy Millard (rspb-images.com)

Visit rspb.org.uk/fendraytonlakes

The Royal Society for the Protection of Birds (RSPB) is a registered charity. England and Wales no. 207076, Scotland no. SC037654

MISCELLANY

Cancelled



The Festival Parade

Saturday 13th June 2020 @ 12.15pm

We would like to invite you to join us opening the Swavesey Gala Day 2020 with a walking PARADE, aided by a Steel band, The Steel Invaders.

This Years theme is **AROUND THE WORLD**.

Let's make it bigger, louder and brighter. Bring banners and flags.

It's a great opportunity to get everyone together and to have some fun!!!

We ask that you arrive at the primary at 11.45am, to be ready to leave at 12.15pm. As the parade leaves the main gates of the school, we will be turning right to go along the high street. The route will then take us down Black Horse Lane, Chantry Close, Moat Way, School Lane and then back onto the High Street and on to the Village Green.

There will be prizes for best group, and best individual.

You will then be able to enjoy the many events that will be taking place on the village green.

Please feel free to contact me.

Jane Christian 07809454913

jane.stevechristian@btinternet.com

Let's make 2020 the biggest Festival Parade!

Swavesey Festival 6th –13th June 2020

SCARECROW COMPETITION

"PEOPLE FROM AROUND THE WORLD"

Name	Cancelled
Address	
Address where scarecrow to be displayed	
Telephone/ email	
Scarecrow character	

Please display your scarecrow throughout Festival Week in a position visible from the roadway so that it is not necessary to enter your premises to see it. Please identify your creation- it should be a person from "Around the World"

A list of entries and their positions will be in the Festival Passport available from several venues during festival week.

Please return completed forms to: Sally Unwin, 59 Thistle Green, Swavesey. Tel: 01954 230200

Entry fee £5; Cheques payable to Swavesey Festival Ltd

Closing date for entries: Wednesday 1st April 2020
(to ensure your entry is in the Passport)

Prizes: The Lucky Winner £60

2nd £40

3rd £20



Village Show in the Marquee Set Recipe Cake

A popular Class in the Home Baking section of the Village Show each Festival is the Set Recipe Cake (Class 28 out of 66 Classes this year). We asked the winner of the 2018 Set Recipe Cake to provide the recipe for the 2020's cake, specifying only that it should be challenging but achievable.

Selwyn has already tried the recipe and found it straightforward and his cake was absolutely super. Here it is so that you can all practice ready for the Show on Saturday 13 June.

Fruit Cake with Ginger

Ingredients

- 450g (1 lb) mixed dried fruit of choice, e.g. chopped dried apricots, quartered cherries, sultanas, raisins, currants.
- 100g (4 oz) softened butter or margarine.
- 1 teaspoon bicarbonate of soda.
- 175g (6 oz) light muscovado or light brown sugar.
- 225ml (8 fl oz) water.
- 2 large eggs, lightly beaten.
- 275g (10 oz) self-raising wholemeal flour.
- 2 teaspoons ground ginger.
- 100 - 175g (4 - 6 oz) stem ginger, drained of syrup - roughly chopped.

Method

Grease and line, with non-stick baking parchment, a deep 20 cm (8 inch) round cake tin.

Oven: 180°C or 160°C (fan), Gas Mark 3.

Put the prepared fruit, butter or margarine, bicarbonate of soda, sugar and water into a large pan. Place on hob and bring to the boil. Stir, boil gently for three minutes. Take the pan off the heat. Allow to cool to room temperature.

Add eggs, flour, ground ginger and stem ginger. Mix well to thoroughly combine all the ingredients. Turn into the lined, prepared tin and gently level the surface of the cake. Bake in the lower part of your oven.

Check after approximately one hour. If you feel the cake is becoming too brown, then lightly place a piece of baking parchment over the top so the cake can continue cooking without over-browning. After 1¼ to 1½ hours (ovens vary) insert skewer to test to see if cooked. Skewer should come out clean.

Once cooked, remove cake tin from oven and place on a cooling rack. Cool the cake in the tin on the rack. Once completely cool wrap in greaseproof paper and foil, or clingfilm or place in cake tin or airtight container.

This cake keeps well and freezes well. Enjoy!

Paying too much for your glasses?

Save Money - Buy Direct!

Visit our factory shop to see our fabulous range of Discount Prescription Eyewear

- Hundreds of frames to choose from, including designer frames from Ray-Ban, Polo Ralph Lauren, Oakley, PRADA, Ted Baker and Versace
- Specialists in high and complex prescriptions
- Same-day or next-day service available*
- Save up to 75%
- Huge range of designer sunglasses
- Full range of sports eyewear



Official stockists

*subject to prescription and availability



We are open 9am to 5pm Monday to Friday, and 9am to 1pm Saturday



Call us **01954 231545** Visit our website **www.all-eyes.co.uk**
20 Norman Way Industrial Park, Over, Cambridge CB24 5QE



BEAUTY, RELAXATION AND A WARM WELCOME...

Specialists in Shellac nails, Manicures & Pedicures, Spray Tanning, Hair removal, Facials and Massage.



Stockists of Elemis Skincare, Sp@home and much more...

Gift Vouchers now available online at www.englishrosebeautyhouse.co.uk



16 Berrycroft, Willingham, Cambridge CB24 5JX. Tel: 01954 261176



Village Show in the Marquee Saturday 13 June 2020

In 2018 the number of entries in the Village Show was 28% higher than in 2016. Perhaps rashly the number of Classes and their variety have been increased for 2020 and if we get a similar increase in entry numbers, we should end up with around 600. It would be fantastic if we could exceed 2018's total entries. This event is a major part of the Village Festival. We really appreciate people who have submitted entries in previous years and would welcome more people having a go. There are lots of different categories to choose from - something for everyone, and it's great fun"

A large amount of effort will be put into organising the Show on the day, requiring about 15 people from Hale Road Allotments to get everything done before the Parade arrives around 1.00 p.m. This is in addition to the 7 judges and 1 calligraphist appointed from outside Swavesey. We start at 6.00 a.m. by setting out the thirty-something tables and laying banqueting roll and marking off different lengths for each Class then marking the allotted locations to each entry. This phase is completed by 8.00 a.m. when queues of people outside make it clear that they have already arrived with their entries. Then comes a hectic two hours of booking in entries at four reception desks and escorting competitors to where their various entries are to be placed. Judging and writing in names of winners on around 270 coloured certificates (1st, 2nd, 3rd and HC) then placing them along with the red rosette for 1st place is conducted at a more sober pace. The Show will open to the public at 1.30 p.m.

To make things easier for entrants this year we have moved the deadline back four days for registering entry forms and making payment to Tuesday 9th June – just four days before the Show. However, the final marquee plans and several very important lists used on the day of the Show cannot be prepared until all entries and payment are in. **Therefore, early registration is encouraged. Please note that Tuesday 9th June is the final date for registering and paying for entries. Absolutely no entries will be accepted after this date.**

Children's age ranges have been realigned with those of pre-Rainbows, Rainbows, Brownies, Guides and Rangers (apologies to the boys) which results in some overlap of ages but don't ponder on it for long – just do what you think is best. In compensation it also means more Children's Classes, hence more certificates and red rosettes.

To add even more colour to the marquee we will have a "Flower Meadow" inside, which is a creative community art project initiated by Nataliya. This will be a 'meadow' of knitted and crocheted flowers made by school children attending the crochet club at Swavesey Primary School along with Swavesey residents and people with a connection to Swavesey. Each one is as unique as the person who made it; together they form something much bigger than simply the sum of all the flowers.

Hard A5 copies of the Village Show guidance, Classes, exhibit fees and entry form will drop through your letterbox in early May along with the colourful fold-out full programme of all Festival 2020 events, but for those who are keen to put plans in place both documents can be found now on the Festival website at www.swavesey-festival.co.uk. Take a look now



Swavesey Festival 2020

6th June -13th June

Theme for 2020; "Around the World"

Hopefully you are not in the midst of a storm reading this because storm Dennis is raging as we are preparing it, fingers crossed for brighter skies soon.

The programme is now a more definitive one and an insight into the events is detailed here. We will also be delivering our programme to your home in early May, well ahead of festival week.

The First weekend 6-7th June:

Scarecrows (on the theme of "People from Around the World") Forms on the Website and in this magazine.

Exhibition at St Andrew's Church about "Landscapes of the World" this will also include smaller exhibitions by the Quilting Groups and Swavesey Camera Club.

The Manor House will also be open at the same time as St Andrew's with another patchwork quilting exhibition.

The Memorial Hall Café returns this time with a "Around the World in 80 cakes" theme along with arts and crafts for the children to participate in.

Open Gardens & Allotments detailed in other articles

Community Choir at St Andrew's Church 6th June at 7pm "Around the World in 80 minutes"

Midweek 8th-12th June

Monday 8th June - History Walk a popular event in 2016, Selwyn can it for two evenings!

Tuesday 9th June - Story time at the Library making flags from around the world with juice and biscuits.

Tuesday 9th June - Evening Concert Over Community Singers and Drummers at Swavesey Windmill 7.30pm. Tickets £5 per adult & £2 per child

Wednesday 10th June - Family Fitness Evening session on the Village Green hosted by Jim Stevenson from Over Power 6.15pm- 7pm £2 per adult, Children are free

Thursday 11th June - Bingo and Tea at Thistle Green 2.30 p.m. in the Community Room

Friday 12th June - Silent Disco in the marquee on the Recreation Green A disco with a difference and a licensed bar, we welcome 14 years to 100 years

to experience this new Swavesey event. ID will be required at the bar for 18-21 years. Food will be available to purchase.

Saturday 13th June - Parade, Gala Day, Village Show and Music on the Green Starting off with the Parade we are hoping to make this the biggest one by involving many people within the village, please come out and support them all.

On Gala Day we have local groups to entertain you and lots of stall holders. Enjoy a cup of tea and a cake in the Marquee after perusing the Village Show. Plenty of activities to entertain young and old, some new food outlets such as Wood Fired Pizza's, Longhorn Farm shop BBQ, Azahar Spanish Tapas and Crepe Cabin to name a few and if you fancy a craft ale or gin then head over to "Gentleman Jim's Truck"

Music on the Green will be supplied by a SVC Concert band, Grape Marmalade and Big 10, with infill music from Jack Langley Disco's. At 10.30pm we will finish Festival 2020 with our Fireworks Finale supplied by "Pains Fireworks".

We will as in previous years, produce a "Passport" for a small fee which will give access to the exhibitions, gardens and some events. The main events are ticketed; most of the entry fees are very reasonable and are simply charged to cover our costs.

Information can be found on our website www.swavesey-festival.co.uk and tickets will be available from Swavesey Windmill. Our website has all the entry forms for Gala Day pitches, Village Show and the "100" club. For up to date breaking news and updates on Festival week, please follow us on Twitter and Facebook.

Additionally, we continue to look for sponsors for the Festival, so please do get in touch if you or your company would like to support the Festival week.

Other Festival Events for you to support in 2020 are:

Saturday 16th May, The Great Gatsby comes to Swavesey, 1920's Jazz Night with light supper at The Windmill. Tickets £20 each. Time to find your flapper dresses or be a Peaky Blinder

The Pantaloons are back in the village however due to their popularity we couldn't tie them into Festival week. They are booked for **Wednesday 15th July** on Market Street Green performing "Sherlock Holmes".

The Committee continues its hard work and efforts into preparing a very full week of activities. Please come along to as many events as you can, bringing the sunshine with you

Please feel free to contact me about any of the above;
via email at hello@swaveseywindmill.co.uk or call me on 07747 002296

Lisa Boyes, Chairperson Swavesey Festival Committee

Visit our truly stunning display gardens ...



Probably the largest display centre in the UK, selling directly to trade and the general public

Bannold are one of the UK's largest independent suppliers of natural hard landscaping materials. We stock natural products sourced directly from the UK and around the world enabling Bannold to offer premium products at the most competitive rates to trade and the general public.

- Natural Paving • Setts and Paviours • Stone Walling
- Decorative Gravels • Rockery • Boulders • Waterfeatures
- Topsoils • Soil Improvers • Bark Mulches • Sands
- Hardcore and Cements



Capability Barns
Huntingdon Road
Fen Drayton
Cambridge CB24 4SD

Freephone: 0500 012231
or 01954 231666

Opening Times:
Mon-Fri 07.30 till 5.00
Saturdays 09.00 till 1.00

www.bannold.co.uk



Meridian Update- March 2020



This is now our 3rd Meridian article, if you haven't read about it already, on our 660km ride to raise money for Alzheimer's Research UK, taking place across the Pyrenees in 6 days this August. We decided to do this for our late Grandfather Colin Cleland, who was a sufferer and passed away in November 2018. Alzheimer's is the most common cause of dementia, and this is a disease that has affected so many-family, friends, and patients.

Through our latest efforts we have raised £908.66 for Alzheimer's UK, and this is only

set to rise higher with some of our most recent pledges. One of these was Buffs, who pledged £150, which has been a huge boost, particularly as a Grandfather was a member of the group. It has been really nice to have a whole range of people, from students to retired servicemen interacting with and donating to our campaign, and there is a huge number of people who have shared their own experiences and emotions surrounding the devastation of Alzheimer's. This becomes more apparent every time we discuss and promote our ride.

With the ride now just half a year away we are excited to really push both the fundraising, and ourselves to make the most of our efforts. Emotionally, the winter period has been tough, especially as it limits training opportunities, but what has been amazing is the unending support. We have all been looking forward to getting out on the road, so do keep an eye out in the surrounding area for our Alzheimer's UK jerseys!

We have been approached by more than a few people now asking how we are doing, and offering support, and this has been a huge emotional boost so thank you! Please do help us by spreading the word of what we are doing, and sharing our ride - feel free to get in touch and share your support!

To donate: <https://www.justgiving.com/fundraising/caluexchf>

We are also on Facebook and Instagram- Cycling Memories for Grandpa

Where I grew up. Part 3

And so, I found myself, having transitioned from ex-pat with servant, through comfortable middle-class nuclear family, as part of a single parent family on a council estate in Longbridge, Birmingham, coming full-circle, as it were, back to the city of my birth.

Fortunately, my mother had kept herself on the housing register, so we were afforded a flat in a typical late fifties/early sixties tower block aptly named “Moat House”, in that, to the rear of the edifice was a long thin pond not dissimilar to a moat (and possibly contributing to my continued delusions of grandeur). The moat was surrounded by a four-foot-high railing in a pitiful attempt at keeping the children out of it and was filled with a variety of flora and fauna, included some rather large golden carp. In winter, when we used to have a proper winter, it would freeze over (mostly) and we would see who could venture out the farthest before breaking the ice and ending up with cold, wet trousers. At its deepest it was no more than three feet!

Longbridge, at that time, was on the very outskirts of Birmingham. Consequently, we had access to a lot of relatively wild green spaces. Just across the road was a field which seemed to serve no other purpose but to house a couple of horses and provide an adventure playground, growing wild and naturesome. Sadly, the horses have now been replaced with a housing estate. Also, a short bus ride, or a long walk away were Cofton Park and the Lickey hills. The bus cost 4d. return, which was the price of a Mars bar, so one had to weigh one’s options carefully, assuming one could rustle up 4d. in the first place. Cofton Park would annually host a fair and the hills provided further adventure for a gang of street urchins in need of an energy outlet.

Longbridge was also host to a large car manufacturing plant, colloquially known as “The Austin” on account of the fact that it made Austin, as well as Morris, automobiles. At first, on the approach to Longbridge from the city centre, a large sign proclaimed it to be the largest self-contained factory in the world. Within a couple of years this was reduced to ‘in Europe’, before disappearing altogether, as has the whole factory today. It was impossible to not be aware of the factory on account of the seemingly incessant thumping of the “Stamp Shop”, as it churned out crank shafts day and night.

Life initially was somewhat difficult at first for a Hampshire lad with a strange accent. In the true form of the male species alpha superiority had to be established. I found myself “scrapping” (a new term to me) with the next-door neighbour. I lost, not in part due to the fact that I was unaware that in this environ it was permissible to hit a man on the floor, an unthinkable and ungentlemanly act in my previous life. The neighbour in question went on

to be gaoled for murder, along with his cousin who was the same age as my younger brother. I feel I got off lightly.

When it came to education, however, I was top dog. Birmingham seemed to be a year or two behind compared to my schooling in the south, so I immediately became the swot. This created problems of its own, but at least there was an opportunity to escape the treadmill leading to a life of servitude at “The Austin”, which is where most of the inhabitants of Longbridge appeared to end up. Birmingham was served by a good crop of grammar schools and, while my mother thought the peak of attainment should be draughtsman in the Longbridge factory, I set my sights on hippiedom and three years at university.

And so it was that I managed to escape once I had “grown up”, though if you ask my wife, she will debate the fact that I have grown up. No longer a hippie in dress, but possibly still in outlook, I relish my current rural existence, although from time to time I miss the cut and thrust of the city life.

Chas Barclay, Moat Way

Cyclists aiming to boost ODC funds Bike Rides, Sunday 31st May

Having had such a great result with the Over Day Centre Sportives last year (close to £3,500 raised, with nearly 150 enjoying the day), the cyclists of Willingham Wheels and SOCG – Swavesey and Over Cycling Group – have again teamed up with ODC trustees to generate much needed funds for an essential facility serving the older members of our communities. Three rides are planned for the morning of Sunday May 31st – an 8.5-miler for casual riders, children and families, a 50-miler designed for the more seasoned cyclists and, new this year, a 20-miler in response to requests from people wanting to just have a go. All routes will be risk-assessed, suitably signposted and signposted from Over Day Centre car park, with a post-ride party planned for the day to be held at Over Community Centre offering cool drinks, a hot tub and live music.

Over Day Centre serves several villages in the North East – you will no doubt have seen its minibus passing through you from time to time or other, picking up our older people so that they can enjoy a day out and time with others outside the confines of their own four walls. Outside support from individuals and organisations makes a big difference to the charity and help to deliver and enhance the essential services it provides. And now, with sponsors in Law and Lewis Joinery and estate agents Redmayne, Arnold & Harty already on board, the organisers are hoping that this year’s rides will be another great social and financial success.

If you would like to join us, please add our event on 31st May to your calendar.

Final details will be published soon.

GEORGE BROOKS

George's family would like to thank all relatives, friends and neighbours for their kind messages of sympathy during our recent sad loss.

Also for their attendance at the funeral and donations to the surgery
Thank you all once again.

Spotted Flycatchers

Have you got this increasingly rare bird breeding in your garden? Let us know!



Photo by Tom Reynolds

In recent years many Cambridgeshire community and parish newsletters, magazines and websites have helped with a County-wide survey of Spotted Flycatchers. These are attractive little migrant birds which are summer visitors to village gardens and churchyards. Although they breed with us, they spend up to nine months of the year travelling as much as 16,000 miles a year between here and their wintering grounds in Southern Africa – Angola and Namibia. This is an increasingly dangerous journey for them, and sadly they are in deep decline. Widespread losses amounted to a 50% decline during 1995-2010, continuing an 90% decline since 1970.

Only a few hundred pairs remain breeding in Cambridgeshire, but most villages still have a pair or two; they rarely breed out in the wider countryside. We are continuing our work to find and monitor nesting pairs.

It's almost certain that there are many additional pairs out there of which we are not aware.

Do you have flycatchers in your garden? Will you see one this year, or have you in recent years? The few that remain are here from mid-May to September. And there's lots more to read about our project and Spotted Flycatchers in general at bit.ly/SpotFly

Please email: spofl@cambridgebirdclub.org.uk with any sightings.

Doctors Surgeries

Swavesey Surgery

(01954) 230202

Out of hours 111

Website:- www.swaveseyurgery.nhs.uk

Information & updates on facebook page

Over Surgery

(01954) 231550

Out of hours 111

Website:- www.oversurgery.nhs.uk

Information & updates on facebook page

Longstanton

(01954) 207600

Out of hours 111

Website:-

www.willinghammedicalpractice.nhs.uk

See our website at www.swaveseymeridian.org.uk
for the full and latest surgery newsletters. Ed

Bar Hill Surgery

(01954) 780442

Out of hours (01954) 780442 -

call will automatically be diverted

Website:- www.mhmaple.co.uk/

Fenstanton

7E High Street, Fenstanton

01480 461873

Out of hours 111

Website:-

www.riverportmedicalpractice.co.uk

SUMMIT



LANDSCAPES

PAVING - DRIVEWAYS - BRICKWORK
CARPENTRY - GROUNDWORKS



www.landscapingpaving.co.uk

PHONE: 01223-929394

SCHOOLS INFORMATION



Swavesey Playtimers

Tuesday 10-11.30am
In the back room of the Bethel Church, different craft activities, stories and themes each week. £2

Wednesday 10-12noon
At the Memorial Hall, singing with Sharon from 11.15am. Family with one child, £3. More than one child, £4. Under 6 months. £2.

All children under 5 welcome to these term-time toddler groups. Find out what is going on from our Facebook group - "Swavesey playgroups". A great chance to meet local parents.



9am – 10am	Sing Up	choir	4yrs – 12yrs
10am – 11am	Rockin' Rhythms I	interactive theory lessons	4yrs – 7yrs
	Rockin' Rhythms II		8+yrs
	Rockin' Rhythms III		Grade 3+
NEW CLASS!	Rock School Rockets	guitars, drums	beginners
11am – 12pm	SMS Community Orchestra	instrumental ensemble	all levels; all ages
	Rock School	guitars, drums, vocals	9+yrs

£4 per session!

Swavesey Music School
Swavesey Village College
Gibraltar Lane
Swavesey
CB24 4RS

Now in its 9th. Year!

Check out our new class: RS Rockets
Also, SMS Community Orchestra, open to all ages; adults, parents: why not pick up that instrument from youth and join us on a Saturday morning?
Email for more information and to check availability.

<http://swaveseyms.co.uk/>


Swavesey Village College Performing Arts Department proudly presents...

Disney BEAUTY AND THE BEAST

THE BROADWAY MUSICAL

©Disney

Performances are from 2nd – 4th April 2020 and tickets are available at:
www.ticketsource.co.uk/swaveseyvc



APRIL BURGESS MARTIN SCHOOL OF BALLET
BALLET AT OVER PRIMARY SCHOOL
THURSDAYS
AGE 3+ -17
CLASSICAL BALLET WITH FULLY TRAINED,
QUALIFIED, EXPERIENCED TEACHER
ASSOC. MEMBER ARBTA ,MEMBER BDQT
DBS CHECKED "PREVENT" TRAINED
DETAILS www.abmschoolofdance.co.uk
CLASSES ALSO IN GIRTON HISTON & COTTENHAM



1st Swavesey Scout Group

We have had a wonderful chocolate-fuelled Easter holiday; and are back and looking forward to new adventures in this summer term.

Notable events coming up are the Swavesey Festival in June – we are looking forward to holding a stall during Gala Day and participating in the parade, although our costumes have yet to be decided. Coming up at the end of term is the Grand Finale of our scouting calendar – the much-anticipated group camp! Where Beavers, Cubs and Scouts will all be sleeping under canvas.

The Cubs had a very busy Spring Term, covering Chef badge, Fire Safety badge, and finishing the term with an Easter Egg hunt around the village. For the Chef badge the Cubs learnt about food hygiene and cooked a bolognese sauce and pancakes in the Scout Hut. To earn their Fire Safety badge the Cubs learnt how to spot and prevent fire hazards, and how to safely enjoy camp fires and firework displays. The final part of the badge was a visit to Cambridge Fire Station to meet real Firemen, which was enjoyed by all.

During the first half of the summer term the Scouts will be venturing out and spending a day on the river Ouse on a narrow boat which we are looking forward to. Hopefully the weather will be good enough so we can spend most of our sessions outside. We recently started doing the geocaching badge, it is like a huge treasure hunt around the world and a great way to get out for a hike. The scouts are growing in numbers every term which is great for the club and for the village"

Please note that Cubs and Scouts are both oversubscribed and have waiting lists, but there is (at the time of writing) a few spaces within Beavers. If you are interested in enrolling your child, please contact us using the email addresses below.



Currently all sections meet consecutively on a Tuesday evening, however for Scouts only this may change in September.

Beavers (ages 6-8) marian.bentley@1stswaveseyscoutgroup.org.uk
Cubs (ages 8-10½) janet.stones@1stswaveseyscoutgroup.org.uk
Scouts (ages 10½ -14) jim.burling@1stswaveseyscoutgroup.org.uk



Rainbows, Brownies, Guides and Rangers.

World Thinking Day

World Thinking Day is held on 22nd February each year, the date being chosen as it is the birthday of both Robert Baden-Powell founder of the Scout and Guide movement, and his wife Olave who served as World Chief Guide. In Over District girls from all sections get together on a date close to 22nd February to celebrate and to think of the 10 million girls in Guiding all around the world. Each unit choses a country to find out about Guiding in that country and a little about the country itself. We have a table display each to show the other units what we have found out, we renew our promises, we 'roll pennies' - money which goes to WAGGGS (World Association of Girl Guides and Girl Scouts) to help Guiding around the world and we light candles as we think of Guiding around the world.

Swavesey Rainbows chose to find out about Ladybirds in Ireland. They found out things that are similar to Rainbows like the age range and the promise, and things which are different such as Ladybirds only hold up two fingers for their sign, not three like Rainbows, and the very long list of things a girl needs to know before being enrolled as a Ladybird! They dressed paper dolls in Ladybird uniform. They each had a booklet to fill in and coloured the flag, looked at where Ireland is on a map, found out when St Patricks day is, and also about Leprechauns hiding their pot (or crock) of gold at the end of rainbows!

Swavesey Brownies found out about Brownies in Singapore. The girls made pipe cleaner dolls dressed in the brown shirt and culottes of Singapore Brownies. They found out that Singapore Brownies make the same promise as UK Brownies did until June 2013. They looked at badges and the Promise ceremony and all the things a Singapore Brownie has to know before making her Promise. The girls found out that Singapore is famous for batik, so the girls drew wax pictures of the Singapore Lion. They learned that red is the national colour. The girls took part in a fact scavenger hunt around the meeting place to fill in the quiz booklets. They looked at the Singapore coat of arms and made up their own family coat of arms. They tasted some Singapore inspired foods, including chilli crab.

Swavesey Guides looked at guides in Syria. These Syrian girls continue to meet in this war torn country, doing badges and even managing to go camping. The promise and laws are very similar to the UK Guide promise and laws although Swavesey Guides were not sure about having to promise to be obedient. The girls found out about the Syrian Guide uniform as well. They made slip knot bracelets as Syrian Guides make bracelets to sell to raise funds for camp and badges. They made paper jasmine flowers, as jasmine is considered to be the national flower. They made hummus and a mint and lemon drink and tasted some Syrian inspired street food.

Swavesey Rangers chose to look at Girlguiding in Peru. They found out about the uniform, the promise and law and some of the programme. Members are mainly from the cities. Rangers then looked at some Peruvian culture. Some girls had a go at making panpipes, some had a go at weaving, one looked at Quipu and a couple of girls looked at the Inca Cross and had a go at making a beaded Inca Cross themselves. They also looked at Peruvian foods and cooked themselves Lomo Saltado (steak and chips with onions and tomatoes), croquettes, alfajores and churros with chocolate dipping sauce.

Adult helpers are always welcome, please sign up here if you are interested or would like to know more. www.girlguiding.org.uk/get-involved/

Rainbows and Brownies are full with waiting lists, sign your daughters up early for Rainbows, don't wait until she is 5 and her friends have started! www.girlguiding.org.uk/joinus

FDS

(CAMBRIDGE) LTD

01353 779754

fdssales@outlook.com www.fdscambridgeltd.co.uk



**GRAB & TIPPER HIRE • BULKER TIPPER & LOW LOADER HIRE
AGGREGATE SUPPLY • MUCK-AWAY • DEMOLITION & SITE CLEARANCE
SELF DRIVE & OPERATED PLANT HIRE • SKIP HIRE • TIPPING FACILITY**

PRIVATE AND TRADE WELCOME

**DIGGERS • DUMPERS • DOZERS • FORKLIFTS
SANDS • GRAVELS • BALLAST • HARDCORES • TOP SOIL
COMPOST • CRUSHED BRICK • SLEEPERS
AND MUCH MORE**



Adult Education at Swavesey Village College



NEW - Introduction to Mindfulness
Monday 27th April 2020
4 weeks 7-9pm £52

Course description: An ever-expanding body of scientific evidence shows that mindfulness meditation can help people manage anxiety, depression, emotional and physical pain, as well as improve confidence, communication and resilience to stress. In our busy modern lives, taking small amounts of time to help manage our mental health is as important as eating healthily or exercising regularly.

This 4-week course will introduce participants to the theory and practice of mindfulness, helping them develop the tools to meditate confidently. Emphasis is placed on the practicalities of developing a regular meditation practice and helping students overcome common obstacles.

For details of all our classes and to book your place, please visit our website swaveseyvc.co.uk/community-education
Email: community@swaveseyvc.co.uk
Phone: 01954 234488

Swavesey Village College, Gibraltar Lane, Swavesey, Cambridge, CB24 4RS Phone: 01954 234488
Email: community@swaveseyvc.co.uk



ENTIRE
GROUP



The Complete Gas Heating and Plumbing Company

**Plumbing • Heating • Gas
Bathrooms • Water Softeners
Property Maintenance**

**Tel: 01954 204044 • Web: www.entiregroup.co.uk
Email: service@entiregroup.co.uk**

SWAVESEY PARISH

Parish Council News January February 2020

COUNTY COUNCIL

The PC is aware of many traffic problems in the village particularly in Ramper Road and Rose and Crown Road. The PC continues to take up residents' concerns with our County Councillor and the Highways Department

The Clerk has met with engineers to confirm repairs to the footpath between Middle Watch and Boxworth End to alleviate flooding this will be part of our bid for funding for a Local Highways Improvement bid, a decision is awaited from the CCC. The CCC has some repairs programmed for the Boxworth End section of the footpath.

Many other road maintenance issues are being pursued by the PC affecting Ramper Road, Rose and Crown Road, Taylors Lane and Fen Drayton Road,

The PC is trying to get funds from the housing developments which have been set aside to provide unnecessary digital bus time signs, instead to provide a bus shelter and improvements to the surface and levels of the busway car park.

The PC has been notified of a road closure affecting School Lane, Gibraltar Lane and Fen Drayton Road to form a raised safety area during April.

The PC has been following up residents' concerns about the new Citi 5 bus service arrangement.

DISTRICT COUNCIL

The PC continues to be concerned at the current arrangements for maintaining the villages byways, particularly Hale Road. The byways rates and management by SCDC are to be discussed by the byways committee, SCDC and Landowners to find a way forward.

Cllr Sue Ellington reported on the new Cambridge South railway station at Addenbrookes and an ECO grant scheme.

MICK GEORGE LTD, Waste Transfer Site, Middle Fen Drove.

The PC met to consider responses to consultation on the potential change of use of the existing site to residential development. The consultation was published in a previous Meridian Magazine, on the PCs website and Facebook.

The responses and consideration of the issues affecting the decision are set out fully in the minutes of the 9th January PC meeting which can be viewed on the village website.

The PC decided against the proposal for a housing Development on the site by a large majority.

The PC agreed that it would continue to monitor the operations on the waste transfer site to check that it operates within its planning consents and would raise concerns arising from environmental issues and in particular monitor dust levels arising from activities on the site.

Mick George requested permission for a temporary licence to crush concrete on the site in Middle Fen Drove. The County Council refused permission and informed Mick George that a full planning application that can be properly assessed would be necessary for such activity.

A14 IMPROVEMENT SCHEME

The PC continues to monitor the impact of traffic on the village and concerns about the junction and road closures. The bottleneck at the Swavesey junction that is causing delays to morning traffic trying to leave Swavesey has been raised with our MP.

VILLAGE MATTERS

The annual report from the Tree Warden has been received and maintenance work around the Moat Way play area and elsewhere will take place during February.

COUNCIL NEWS

The Community Orchard has benefited by daffodil planting by Villagers, and a management team set up for the project.

The PC agreed to support the proposal by the Village College to build an AGP (Artificial Grass Pitch) playing surface at the Village College site and reflected this in the budget for the coming year. The Parish Council confirmed within its budget for 2020 that it would apply for a loan of £80,000.00 to provide a grant towards the new community AGP sports facility proposed at the Village College. Meetings are taking place with the Football Foundation and all others concerned to progress the project.

The PC decided to take forward consideration as to stopping off the paved access across the end of Market Street in front of the cottage. Residents will be kept informed.

Ponds - Plans are in hand to clear the reeds from Swan pond. This may require help from SCDC to provide machinery, Access to the rear of the School pond is to be secured to keep it safe for children. SCDC has given the PC £60 to purchase new trees to plant within the Parish. Work to identify tree types and locations is in hand.

Swavesey and Over PCs are putting up Swift boxes in suitable locations. The Shedditt group are making some of the boxes.

The Memorial Garden adjacent to the Memorial Hall is now open and the red telephone boxes set up with displays and local information.

Watch out for activities associated with the Swavesey Festival. There will be a silent disco on the Green on Friday 12th June 8-11pm.

DRAINAGE

Work has been carried out to both the Turnbridge Drain and Church End drains to help avoid flood situations, although further work to Turnbridge Drain east of the High St is still awaited.

Cllr Mr Wilderspin is working with the Middle Level Commissioners and continues to press for action on major drainage works affecting the village

PLANNING

The PC considered a number of planning applications.

The PC was particularly concerned re two proposals:

47 Gibraltar Lane, for two new houses.

48 Middle Watch, one new house

The PC considered that the scale and nature of the developments did not take account of the new Village Design Guide and raised access, scale and drainage concerns.

Full details can be found in the minutes of the January 27th meeting on the village website.

The Village Design Guide has now been adopted as a Supplementary Planning Document and becomes a material consideration in the determination of planning applications.

NEIGHBORHOOD WATCH

Speed watch volunteers are urgently needed especially as many residents are concerned about speeding vehicles.

FINANCE

The PC agreed the Budget for 2019 / 2020 at £78,960.00 an increase on a Band D property of £9.01 in the year.

Swavesey Parish Council
Website:- www.swavesey.org.uk

Parish Councillors	Telephone	E-mail address
Warren Wright (Chairman)	203172	will.wright48@virginmedia.com
John Pook (Vice-Chairman)	230978	pookjhn@aol.com
Martin Johnston	200605	martin.johnston1@ntlworld.com
Lisa Boyes	232603	windmillkennels@oneservice.co.uk
James Dodson	230560	shirleydodson65@gmail.com
Stuart Faben	07887 906982	stuart@fabenjoinery.com
Hannah Parish	203035	hannah.parish@niab.com
Colin Parsons	230861	colin@trinityengineeringltd.co.uk
Sandie Smith	232356	cambridgegills@hotmail.co.uk
Keith Wilderspin	230083	keith.wilderspin@btinternet.com
Doug Hunt	232478	doughuntuk@yahoo.co.uk
Clerk: Linda Miller	202982	clerk@swavesey.org.uk
District Councillor: Sue Ellington	202923	sue.ellington@virgin.net
County Councillor: Mandy Smith Papworth & Swavesey Ward	230248	mandysmith1235@btconnect.com
Memorial Hall Administrator: Nicole Mullee	07963 861791	memorialhall@swavesey.org.uk

From Your DC - Sue Ellington

Hello Everybody

Well spring is on its way and it is a pleasure to live in Swavesey. Isn't it a joy to enter the village with the daffodils planted by the Women's Institute on the kerbsides and the hedgerows in full flower. There is a great community spirit and a sense that people are always ready to help each other in the village. Long may it continue and I want to find ways of welcoming and including all the new residents living in the Bloor homes as well as those to be built in Middlewatch. All ideas welcome.

As you know South Cambs District Council has set its priorities for 2020 which includes being "Green to the Core" so the budget setting council meeting in February included significant investment in eco-friendly projects. These include retrofitting the council offices with renewable energy generation and energy efficiency measures at an estimated cost of £1.8 million and trialling electric recycling lorries at £375000 per bin lorry. Whilst recognising that there is a climate change crisis I feel the council should have spent such large sums on more resident focused projects such as electric charger points in our village halls and public car parks

The council budget also included an intention to borrow £340 million in order to invest in commercial property and earn funds to help pay for the running of the council. I feel this is a potentially very risky strategy but I hope it works as it will reduce council tax costs to residents.

The village Byways are causing considerable problems. As you may know The Swavesey Byways Act 1984 provides for the maintenance of our byways "up to agricultural standard". Landowners, South Cambs and the Parish Council pay to buy road materials which, in the past, the landowners have laid to maintain them. Unfortunately, times have changed, the landowners have got older and unable to do the manual work, the road materials have got more expensive because the A14 has used them, and the byways themselves have new housing and businesses as well as the allotments creating significantly more heavy traffic. They are in a very poor condition after the recent rain and we need to find a way of returning them to a better state which is fair to all concerned. I am working with the council to look at options and hope to call a meeting of all interested parties in the near future. I am happy to listen to any positive ideas.

I am always available to help with council issues, so phone me on 07774146331 or 01954202923 or cllr.ellington@scambs.gov.uk.

Best wishes
Sue Ellington

BC Landcrafts
 BESPOKE LANDSCAPING & TREE SURGERY

- TREE SURGERY & HEDGE MAINTENANCE
- FENCING, DOMESTIC - AGRICULTURAL & SECURITY
- LAWNS - TURFING & SEEDING
- PERSONAL GARDEN DESIGN & BUILD PROJECTS
- HARD LANDSCAPING
- PAVING & DRIVEWAYS
- LOGS & FIREWOOD

Contact Ben Carter on
 Tel: 01954 250830
 Mob: 07836 654252

Email: ben@bclandcrafts.co.uk
 Web: www.bclandcrafts.co.uk

Family firm since 1974

PEST PROBLEM?

LOCAL QUALITY SERVICE

pest control/prevention/
 emergencies/contracts/quotations/
 birds/rodents/insects/more...

t: 01954 230708
 m: 07836 245670
 w: www.drepestcontrol.co.uk
 e: info@drepestcontrol.co.uk

DRE Pest Control Limited

19, WALLMANS LANE
 CAMBRIDGE
 CB24 4QY

Annual Parish Meeting

**Wednesday 15th April 2020 – 7.30pm
Swavesey Memorial Hall**

Your opportunity to hear reports from and ask questions of the Parish Council, its committees, village charities, other village organisations and your County and District Councillors, on items over the past year and for the forthcoming year.

Further information will be published on posters around the village nearer the date

Please do come along to the meeting to learn more about your village

We look forward to seeing you on 15th April.

Swavesey Parish Council



**SACRED HEART OF JESUS
Roman-Catholic Parish
19 Needingworth Road, St Ives, Cambs. PE27 5JT**

Parish Priest: Rev ThomasJ Walton

Tel: 01480 462 192
www.sacredheart-stives.org.uk
email: office@sacredheart-stives.org.uk

Mass Times:
Saturday 17.00 (Anticipatory)
Sunday 08.00 and 11.00



REED KITCHENS & BATHROOMS

DESIGN TO INSTALLATION
THE COMPLETE SERVICE

We are a local established company since 1994 that manufactures a range of top quality kitchens and offers them direct to you, at an upfront price that includes everything from design to full installation. It also includes your choice of top range appliances from the likes of NEFF and Bosch.

Makeover your kitchen using our door and worktop replacement service.

Call for a free Brochure



ArtiCAD
COMPUTER AIDED DESIGN SERVICE

DOMESTIC INSTALLER

KBBi
www.kbbi.co.uk

KITCHENS



BATHROOMS



BEDROOMS



Tel: 01954 232899 Mobile: 07711 696015
For more details visit: www.kitchenscambridge.com
email: glenn@kitchenscambridge.com

LANGLEY & Co. Accountants

**Are you paying too much tax?
Are you claiming all your business expenses?
Do you need help with your accounting and taxation affairs?**

We provide a complete range of accounting and taxation services including:

- ◆ Accounts preparation for sole traders, partnerships and small businesses including limited companies
 - ◆ Self assessment preparation and online filing
 - ◆ Bookkeeping including payroll, CIS and VAT
- ◆ Taxation advice
- ◆ Business start-ups
- ◆ Business planning
- ◆ Pension reviews

For a friendly and competitively priced service from local accountants please contact Doug Langley at:

Unit C1, 2 Station Road, Swavesey, CB24 4QJ
Tel: 01954 231249 Email: doug@langleyaccountants.co.uk



BETHEL

BAPTIST CHURCH

Revd. David Mann minister@bethelbaptistchurch.org.uk
 Church Office: 01954 230458



Friday 24th April
4.15 - 6pm



Sunday Sanctuary
Sunday 19th April
7pm

EASTER AT BETHEL



MAUNDY THURSDAY



BETHEL
THURSDAY 9th APRIL
6:00 PM

Join with us as we share a meal and communion at the table and reflect on the Last Supper.

GOOD FRIDAY



BETHEL
FRIDAY 10th APRIL
3:00 PM

Join with us as we quietly reflect on the last words of Jesus spoken from the Cross.

SUNRISE SERVICE



FEN DRAYTON LAKES
SUNDAY 12th APRIL
5:45 AM

Join with us as we watch the sun rise over Ferry Lagoon and celebrate the significance of the Empty Tomb.

EASTER CELEBRATION



BETHEL
SUNDAY 12th APRIL
10:45 AM

Join with us as we raise celebration and praise for the Good News of the Resurrection.

If you would like to join us at the Maundy Thursday Meal please contact Stacey, our administrator, at admin@bethelbaptistchurch.org.uk so that we have an idea of how many people we are catering for.

Artitude.

EXPLORE AND CREATE!
2 days of art workshops for young people ages 5-16.

Lent?
Easter?
Love?
Sacrifice?



9th & 10th April .
10.30am - 2.30pm

Bethel Baptist Church.

email:


admin@bethelbaptistchurch.org.uk

to book places.



The Parish Church of St Andrew, Swavesey

A warm welcome awaits you at your parish church.

Service Pattern		
1 st Sunday of the month	11:00am	Holy Communion
2 nd Sunday of the month	11:00 am	Morning Worship
3 rd Sunday of the month	8am 11:00 am 7:00 pm	Holy Communion: Book of Common Prayer Holy Communion Sunday Sanctuary – Bethel Baptist Church
4 th Sunday of the month	11:00 am	All Age Service
5 th Sunday of the month	10:30am	Joint Benefice Holy Communion
Contact Details: To arrange weddings, baptisms, funerals, services of thanksgiving for the gift of a child:		
Team Rector: Revd. Simon Gill	01954 230434 Email: simon@5folds.org.uk	
or		
Team Administrator: Gillian Beal.	Telephone: 01954 203459 (Monday to Thursday 10:00 to 12:00) Email: admin@5folds.org.uk	
To arrange use of the church for concerts or other events:		
Churchwardens:		
Mrs Nicky Carne	Telephone: 01954 230971 Email: nicky_carne@hotmail.com	
or		
Mrs Jacqui Fuller	Telephone: 01954 230774 or Email: jacquifuller@hotmail.com	
For details of our Youth Group, Branches, or Sunday School Services:		
Mrs Elizabeth Street	Telephone: 01954 232358 or Email: street.el@virginmedia.com	
For Church choir details:		
John Mullett:	Telephone: 077026 79191 or Email: johnajmullett@gmail.com	
For bell ringing details:		
Edie Robinson	Telephone: 07967635318. Email: Edith_robinson@hotmail.com	
 St Andrew's Church Swavesey		



St Andrew's Church News

Our New Vicar

St Andrew's belongs to a group of churches known as 5Folds which includes Swavesey, Over, Willingham, Longstanton and Northstowe. Simon Gill has responsibility for all five parishes and by the time you receive this copy of The Meridian, we are hoping that we will have appointed a Team Vicar to share this responsibility with him. We are looking forward to welcoming this new person to Swavesey.

Easter Services

We would love to welcome you to any of our Easter services.

Sunday, March 22 nd	11am	Mothering Sunday All Age Service
Sunday, April 5 th	11am	Palm Sunday: Holy Communion
Thursday, April 9 th	7:30pm	Maundy Thursday: Holy Communion
Friday, April 10 th	tbc	Stations of the Cross
Easter Sunday	11am	Holy Communion

We have a well-equipped Children's area and there will be children's activities during the morning services so please bring your children or grandchildren with you. They are always welcome!

Events at St Andrew's

Sunday, May 17th :2:30pm - 5:30pm: Ding Dong Bell!

For all those would be campanologists (bellringers) amongst you, we will be holding a special afternoon on Sunday, May 17th which will be all about our wonderful bells. The afternoon will start with a demonstration of bell ringing by the splendid Over and Swavesey Bellringers followed by a talk about the history of the St Andrew's bells by John Shepperson BEM who has been persuaded to come out of his lecturing retirement to tell us all about the origins and casting of our bells.

There will be opportunities to have a go at ringing a bell and also a chance to go up the Tower to see the bells. You must be over eighteen and have suitable footwear as the climb up to the bells involves steep ladders. Our children's activity area in the Lady Chapel will be open.

Refreshments will be available during the afternoon.

The event is free but tickets for the talk and tower tours will be available in advance from: jacqui_fuller@hotmail.com. You will need to sign a consent form in church before you can climb the tower.

Swavesey Festival Week

We look forward to welcoming you to a range of Festival displays in St Andrew's during the Festival week.

Dates for your diary

Saturday, 4th July: Open Garden and Studio, Priory House, Swavesey.
Saturday, August 1st: Theatre production: The Three Musketeers
Saturday, September 19th: Eco Fair at St. Andrew's

Community Groups & Charities

Swavesey Neighbourhood Plan Steering Group	A voluntary group who meet on the first Monday each month to set out the vision for Swavesey and the planning policies needed to manage development according to the wishes of the local community. See http://www.swavesey.org.uk/neighbourhood-plan/ or Email: clerk@swavesey.org.uk for more information
Cam Sight	Cam Sight is a local charity which offers support to anyone with a visual impairment, along with their family and carers. We meet on the 4th Wednesday afternoon of each month in Bar Hill. For more information please telephone Joan in Bar Hill on 01954 200622 or Alison at Cam Sight on 01223 420033 or email alison@camsight.org.uk . For more info see:- www.camsight.org.uk
Cambridgeshire Hearing Help	CHH is a charity that helps people with hearing loss. Volunteers service NHS hearing aids and provide batteries and they attend Swavesey quarterly at Thistle Green. Advice on any aspects of hearing loss is available at a hearing help session or by calling the office on 01223 416141, e-mail enquiries@cambridgeshirehearinghelp.org.uk or check the website cambridgeshirehearinghelp.org.uk
Care Network	Care Network supports volunteers, encourages independence and develops good neighbour projects. We provide the Welcome Home from Hospital service across Cambridgeshire. Contact:- Care Network, 5 Broadway House, 149-151 St Neots Rd, Hardwick, Cambridge, CB23 7QJ (tel: 01954 211919). care-network.org.uk/
Community First Responder Scheme	The local group in Over and Swavesey has provided help over many hours and attended over 20 patients in your community. You can support the group and help to fundraise for equipment or volunteer to become a Community First Responder within your community. Contact:- responderadmin@eastamb.nhs.uk or call 01284 731802
Swavesey Library	A volunteer run community library based in Swavesey Village College. We are able to providing a full range of library facilities being directly linked to the Cambridgeshire County Council library service. For more info see:- www.swavesey.org.uk/village-link/swavesey-library
The Friends of the Rosie Hospital	The Friends of the Rosie Hospital are helping to make the Rosie a more comfortable environment for mothers and babies. Contact:- Mrs Mary Sanders (Hon Chair) rosieinstitches@ukonline.co.uk Tel 01223 356615
East Anglia's Children's Hospice (EACH)	Put your free time to good use and volunteer at East Anglia's Children's Hospice (EACH) in Milton. Volunteering at a children's hospice doesn't always mean care work and fundraising as there are also tasks such as admin and maintenance of the grounds. Contact:- Clare Bates on 01223 815 134, email clare.bates@each.org.uk
Community Resourcing	We have a small group of local volunteers (local residents from our community) who would like to help other members of our community with any practical tasks. Contact:- Parish Council Tel: 01954 202982 or Email: clerk@swavesey.org.uk
OWLS Community Car Scheme	Run by DBS checked volunteers the scheme offers a door-to-door service, for medical or some social journeys, to people who are unable to access other forms of transport. Ring 07505 254363 to book a journey, find out more, or to volunteer as a driver

CLUB INFORMATION

Army Cadet Force	Swavesey Detachment, No 2 (Cromwell) Company, Cambridgeshire Army Cadet Force meets each Tuesday evening at the Swavesey Village College from 7 pm. New recruits are welcomed from ages 12 years (year 8) to 18 years. Contact - Sgt Phill Barrett phone 07786981380																					
Over District Girlguiding Swavesey and Over	<table border="1" style="width: 100%; border-collapse: collapse;"> <thead> <tr> <th style="text-align: left;">Unit</th> <th style="text-align: left;">Evening</th> <th style="text-align: left;">Contact</th> </tr> </thead> <tbody> <tr> <td>Swavesey Rainbows</td> <td>Thurs</td> <td>caroline@overroad.co.uk</td> </tr> <tr> <td>Swavesey Brownies</td> <td>Mon</td> <td>swaveseyguides@gmail.com</td> </tr> <tr> <td>Swavesey Guides</td> <td>Thurs</td> <td>swaveseyguides@gmail.com</td> </tr> <tr> <td>Over Rainbows</td> <td>Mon & Tue</td> <td></td> </tr> <tr> <td>Over Brownies</td> <td>Wed & Thurs</td> <td></td> </tr> <tr> <td>Over Guides</td> <td>Tue</td> <td></td> </tr> </tbody> </table>	Unit	Evening	Contact	Swavesey Rainbows	Thurs	caroline@overroad.co.uk	Swavesey Brownies	Mon	swaveseyguides@gmail.com	Swavesey Guides	Thurs	swaveseyguides@gmail.com	Over Rainbows	Mon & Tue		Over Brownies	Wed & Thurs		Over Guides	Tue	
	Unit	Evening	Contact																			
	Swavesey Rainbows	Thurs	caroline@overroad.co.uk																			
	Swavesey Brownies	Mon	swaveseyguides@gmail.com																			
	Swavesey Guides	Thurs	swaveseyguides@gmail.com																			
	Over Rainbows	Mon & Tue																				
Over Brownies	Wed & Thurs																					
Over Guides	Tue																					
Swavesey Spartans	Swavesey Spartans are a Chartered Standard Youth Football Club affiliated to Cambridgeshire Football Association. The club runs boys and girls teams from under 6 through to under 17. For information and enquiries please contact Chairman - Gary Peet on 07976 359494 Secretary - Colin Baker on 07976 636771 Club Welfare Officer - Carolyn Merricks on 01954 20497																					
1st Swavesey Scout Group	All sections meet on Tuesday at the Scout Hut on the SVC site Beavers - 16:45 to 17:45 Contact: Marian Bentley Email: marian.bentley@1stswaveseyscoutgroup.org.uk Cubs - 18:00 to 19:15 Contact: Janet Stones Email: janet.stones@1stswaveseyscoutgroup.org.uk Scouts - 19:30 to 21:00 Contact: Jim Burling Email: jim.burling@1stswaveseyscoutgroup.org.uk For any other Scouting issues Contact: Jim Burling Email: jim.burling@1stswaveseyscoutgroup.org.uk																					
Swavesey Early Years and Playwork Centre	Swavesey Early Years and Playwork Centre are based in their own purpose-built unit on the primary school site. It comprises Early Years children (aged 2 – 4 years) between 9am and 3pm (formerly Swavesey Pre School) and we provide activities and care for primary school aged children before and after school. Breakfast Club runs from 7.30 am to 9am and After School Club from 3.15pm to 6pm. For information please contact Carol Panther (Early Years and Playwork Manager) by email: evandp@swavesey.cambs.sch.uk or by phone 01954 273312 or 07803 812221.																					
Swavesey Music School	Meets every Saturday of term time at Swavesey Village College. Only £3.00 per session. For further details see: www.swaveseymusic.co.uk/																					

Health and Wellbeing Club	A club for older adults which runs on the last Tuesday of the month with the exception of December. The group meets at the Community Centre, Thistle Green, Swavesey from 10.00 to 11.30am. Refreshments, chair-based exercises, speakers and time for conversation. No booking is required and the group is Free.
British Tang Soo Do Institute	British Tang Soo Do Institute practices the Korean martial art of Tang Soo Do. Our club training covers self defence techniques and many aspects of fitness including flexibility, coordination, conditioning, balance and discipline helping to promote a healthy lifestyle. For further information please contact Master Jeff Cockram on 07863 345681 or jeff@btsdi.co.uk or see our website: www.btsdi.com
Swavesey Tang Soo Do Club	Classes are held Monday 18:30-20:00 in the main hall at the Primary School, Swavesey and Wednesday 18:30-20:00 in the Memorial Hall. We are a family run club offering Martial Arts training in a friendly atmosphere. Training is available for all ages from 5 and over. Children, adult beginners, family groups and people with previous martial arts experience are all welcome. Contact Louise Morton on 07711 256512 Email: enquiries@swaveseytsd.co.uk Website: www.swaveseytsd.co.uk/
Allotments in Swavesey	Down Hale Road towards the windmill and on the right there are 61 plots, mostly 150 sq yds (125 m2) in area, backed up by eight water tanks. Large yields of a wide range of high quality vegetable, fruit and flower crops can be grown successfully. If you are interested in joining the waiting list contact Russell Fear on 01954 202846.
British Legion	For information contact:- Chairman - Robert Bond 01954 201645 RBL or robert.bond4@ntlworld.com
Swavesey Badminton Club	Located at the Swavesey Village College Sports Centre. The Club offers a high standard of play at club nights on Tuesdays 7pm to 8pm and on Fridays from 6.30pm to 9.30pm. We play competitive badminton in the Cambridge leagues and run men's, women's and mixed teams. Contact Helen Taylor on 01954 230997 Email: enquiries@swaveseybadminton.net website: www.swaveseybadminton.net
Swavesey Billiards and Snooker Club	For information/membership please contact Graeme Waites (01954 230113) Email graham.waites566@btinternet.com
Swavesey Camera Club	At Swavesey Camera Club we are proud to cater for photographers of all standards. For more information visit our website at www.swaveseycameraclub.co.uk . We meet every Thursday, 7.30 - 9.30pm, Lecture Room, SVC. Non-members welcome - £4 charge (first visit free). For further details please ring John Turner (01954) 202076.
Fenland Squash Club	Located at Swavesey Village College. Swavesey Fenland Squash Club offers team, league and friendly squash matches and has club nights, tournaments as well as racketball. For details contact Brian Chapman 07982 658614 Jamie Tuffee 07807 968768 Chris Ramsdale 07906 671340 Details of the club including contact details can be found at www.fenlandsquash.co.uk

Over Netball Club	We train on a Tuesday night 7pm till 8.30pm on the outdoor courts at Swavesey Village College. Small friendly club, play in CDNL local league, beginners/ everyone welcome. Cost £3 per session. Contact is Lindsay Foster - lindsayfoster001@gmail.com 01954 202070 or 07543 460725
Swavesey Community Choir	If you enjoy singing and having fun then come and join Swavesey Community Choir. We meet every Wednesday in term time in St. Cecilia's Hall at SVC, from 7.30pm - 9pm. You don't need to be able to read music and no auditions needed, tenor and bass voices particularly welcome. For further details contact Chrissie Richardson 07881 824095. Website: www.swaveseycommunitychoir.co.uk
Swavesey District Bridleway Association	A liaison group representing local horse riders whose main aim is to protect existing and create safe new horse riding links between all local villages. New members welcome. Regular Newsletter/Social events calendar. Please contact Sue Rogers (01954) 232758
Swavesey & District History Society	Meet every third Tuesday in the month, 7.30pm, Global Resources Centre, SVC. Contact Carolyn Redmayne, Secretary (01954) 230037
Swavesey Institute Football Club	New players always welcome, please contact: Phil Baines on 01954 200377 [Saturday sides] or Jerry Ladell on (01954) 201018 [Veterans side].
Linedance	Linedance classes held on Wednesday mornings at the Bethel Baptist Church 9-30 to 11-30 am. Beginners always welcome. Contact Deborah Walker 01954231382 Email: deborahwalker105@talktalk.net
Swavesey & Over Conservation Society	Meet at Bethel Baptist Church, Middlewatch Swavesey CB24 4RP commencing at 7.30pm on the 2 nd Wednesday of the month unless otherwise stated. If you need a lift: PHONE: Trevor Grange - 01954 230119 or Pat Miles - 01954 780485. Guests Are Always Welcome!
Swavesey & Over Tennis Club	Club night 1 October to 1 April is on Monday, 7.00 to 9.00pm. From 1 April - 30 September there will be club nights on both Mondays and Wednesdays. We welcome new members from anywhere in the locality. Further information from s.taylor996@btinternet.com www.swaveseyandovertennisclub.btcc.co.uk
Swavesey RADsoc	Friendly local drama group staging two or three productions a year. New members always welcome. Contact: Nathalie Balzano: nathaliewoodward@hotmail.com Visit our website at www.swaveseyradsoc.org.uk
Swavesey Speakers	Develop your public speaking skills at this Toastmasters International club. Guests welcome! 1 st & 3 rd Tuesday of every month at the Memorial Hall from 7pm to 9pm (occasional venue change). More details: www.swaveseyspeakers.toastmastersclubs.org or call/text Faye on 07908 443610.
Swavesey W.I.	We meet every second Monday of the month at 7.30pm in the Memorial Hall. New members are always welcome to enjoy a variety of invited speakers and have a chat and cup of tea/coffee afterwards. For further information contact Linda Saunders (01954) 201162

THE MERIDIAN ADVERTISER

April/May 2020

Landscaping & Garden Services

Grower & Supplier of Trees, Shrubs & Hedges



- ✗ Supply and or planting of trees, shrubs and hedges
- ✗ Cutting / Pruning of trees, shrubs and hedges.
- ✗ Land Preparation, spraying, lawn seeding and turfing
- ✗ General maintenance, clearance and repairs
- ✗ Fencing, Gates and Paving

For a FREE estimate phone :- 07786699977

or 01954 770306

or visit www.eparish-landscaping.co.uk

or Email : edwin@parishnet.co.uk



ANDREW EVANS

01954 780 999 – 01223 864335

email: andrew@omegaclean.co.uk

www.omegaclean.co.uk

- ✓ Carpet Cleaning
- ✓ Upholstery Cleaning
- ✓ Tile & Grout Cleaning
- ✓ Leather Cleaning
- ✓ Oriental Rug Cleaning
- ✓ Carpet & Fabric Protection
- ✓ Allergy Relief Treatment
- ✓ Odour Eradication
- ✓ Stain Removal
- ✓ Carpet Fitting

Family Business Since 1980



M.B. FLACK

Interior & Exterior

Painter & Decorator
& Repairs

30+ Years Experience
in the trade.

Free Estimates

Telephone

01954 231 915

ALEX ARTHURS

BUILDING SERVICES

ALL ASPECTS OF BRICKWORK UNDERTAKEN

EXTENSIONS • TRADITIONAL BRICKWORK • ALTERATIONS
GARDEN WALLS • CHIMNEY REBUILDING • REPOINTING
FIREPLACES • STONE SILLS AND THRESHOLDS

PAVING • SLABS & NATURAL STONE • BLOCK PAVING
CONCRETING • GROUNDWORKS • FENCING • DECKING

FOR A FREE QUOTATION & ADVICE CALL ALEX ARTHURS

01954 232050 or 07841 433652

YOUR PERSONAL WEALTH. OUR PERSONAL RESPONSIBILITY.

At Tilney, we have been helping clients achieve their financial goals for more than 180 years. Whether you are saving for retirement, want to pass on your wealth or would like to have your investments managed by an expert, we can do the same for you.

To find out how we can help you, please call our Cambridge office on **01223 452 840** or email neil.trickett@tilney.co.uk for Investment Management or laura.ingram@tilney.co.uk for Financial Planning.

Investments carry risk –
investors can lose money investing.
tilney.co.uk



Alpha Cars

**01954
23 23 00**

www.alphacarsonline.co.uk

Your local, reliable taxi firm
think taxi, think Alpha Cars

• Corporate Accounts Welcome • Nights Out
• Airport Transfers • Village to Village

Sales: Servicing Salt

AQUASTREAM
Water Softeners limited

- ▶ Supply & Installation Service
- ▶ Servicing & Repairs
- ▶ Drinking Water Systems
- ▶ Salt Delivery & Collection

01954 230898



www.aquastream-softeners.co.uk

Unit 17 Meridian, Buckingham Business Park, Anderson Road, Swavesey, Cambridge, CB24 4AE

Authorised
Ecowater & Kinetico
Dealership



Andy Tibbett & Sons Painting & Decorating



- * All internal & external work carried out to a high standard
- * Trade references can be supplied
- * Very competitive pricing
- * A prompt & polite service from a name you can trust

Telephone: 01954 230810

Mobile: 07717 493723

Email: andrewtibbett@hotmail.co.uk





Ash Croft Veterinary Surgery

169 St. Neots Road,
Hardwick, Cambridge CB23 7QJ
Mon-Fri 8.30am-10.30am
4.30pm-7.00pm
Saturday 9.00am-11.00am
Sunday 10.00am-11.00am
Tel: 01954 210250

Unit 1 Pendrill Court, Ermine Street North
Papworth Everard, Cambridge CB23 3UY
Monday Wednesday Friday 11.30am-1.30pm
Saturday 12noon-1.30pm
Tel: 01480 831615

Laura Wood MA, VetMB, MRCVS
Simon Shore MA, VETMB, MRCVS
Dragan Tomovic BVSc, MRCVS
Consultations by appointment only

G B Builders

NO JOB TOO SMALL

**FOR ALL MAINTENANCE RENOVATIONS
AND DIY WORK**

All general building repairs & odd jobs
Specialist in Painting & Decorating
Groundwork & Grass cutting

- Fencing
- Brickwork & Plastering
- Plumbing
- Driveways, Paths, Patios
- Carpentry
- Slabbing
- Roofing
- Concreting
- Tiling
- Blockpaving
- Drainage
- Guttering

Call Today
07877 742420
Or 01480 437511
g.builders@yahoo.co.uk

BA Building Services

EXPERIENCED LOCAL BUILDER

For all your building requirements

- All aspects of Brickwork
- Extensions
- Patios, Block Paving, Fencing
- Conservatories
- Porches, Doors & Windows
- Tiling
- Bathroom & Kitchens

ALL ENQUIRIES WELCOME

TEL 01954 232 241 MOBILE 07952 339 227

F.W. COOK FUNERAL SERVICE

49 Church Street Willingham

Tel Willingham 260325

Andrew Cook Dip FD Kay Cook Dip FD MBIE

A long established family business providing a personal 24 hour service

Golden Charter pre-payment funeral plans available

COOK'S MEMORIALS

New memorials and refurbishments
Brochures available on request

A. R. CATER

Carpentry & Joinery

Established 1984



- KITCHENS •
- WARDROBES •
- CUPBOARDS •
- SECURITY LOCKS SUPPLIED & FITTED •
- COVINGS FITTED •
- UPVC FASCIAS, SOFFITS & GUTTERING •
- TILING TO KITCHENS & BATHROOMS •
- GENERAL PROPERTY MAINTENANCE •

*CALL TODAY FOR A
"FREE ESTIMATE"*

01954 - 232069
OR
MOBILE 07778 307578

IRON MY STUFF

A friendly & professional local ironing service

Your time is precious so spend more of your time doing what you want.

Leave the ironing to me.

I work in a smoke and pet free environment. You can be sure that your clothes will be treated with care and returned in pristine condition.

One off, ad-hoc or regular services available. Free local collection and delivery.

References available.

Call, text, e-mail or visit my website for details
www.ironmystuff.com

07411 412448

01954 231559



Personalised wellbeing therapy in Swavesey

Learn Relaxation Techniques or Mindfulness. Take time out for a Relaxing Massage or Facial

Tropic Ambassador – freshly made, vegan, cruelty-free, green skincare products

Website: www.jkreflections.co.uk

Email: jo@jkreflections.co.uk

Phone: 07714 625243

Facebook: JK Reflections

Gift Vouchers available



DDB Home Solutions Limited

Making your house a home

We are a company based in Needingworth specialising in kitchen and bathroom installations and can also supply the following services;

- Carpentry and Joinery
- Plumbing
- Electrical installation – Part P registered
- Floor and wall tiling
- Less-abled Bathrooms and Wet Rooms



We are a member of the Institute of Carpenters and also the Guild of Master Craftsmen with over twenty years experience

Visit our website for more information - www.ddbhomesolutions.co.uk

For an informal discussion or quote please contact Darren or Jo Turnbull

Tel: 01480 495984, or email us at Darren@ddbhomesolutions.co.uk



ELECSA





DJI
DENISE JACKSON INTERIORS
CURTAINS • BLINDS • SOFT FURNISHINGS

www.denisejacksoninteriors.co.uk
2 Long Harting, Over CB24 9HS



I hand make quality **CURTAINS, BLINDS AND SOFT FURNISHINGS** that are designed to meet your individual needs.

I supply a **LOVELY RANGE OF FABRICS** from leading companies or we can make use of fabric you may already have. I also have a range of **TRACKS AND PULLS** to supply and fit.



I'm DELIGHTED TO NOW BE ABLE TO OFFER BESPOKE LAMPSHADES IN A RANGE OF SHAPES AND SIZES.



I offer a **FREE INITIAL CONSULTATION** in your home and a personal quotation. Final hanging and dressing are all part of my service.

For friendly, helpful advice please get in touch
01954 200070 • 07910 507514
DENISE@DENISEJACKSONINTERIORS.CO.UK

Professional Arborists based in Swavesey, Cambridge. We offer a free, no obligation quote. Advice on any trees/hedges. Deal with any conservation area or Tree Preservation Order Applications. A freindly, efficient service, leaving your garden or land clean and tidy.



Tree Felling / Dismantling
Crown reduction / thin / lift / deadwood
Pruning / Planting
Hedge trimming / reducing / removal
Stump Grinding
Seasoned logs

NPTC Qualified Staff
Full Liability Insurance



DELLAR
TREE SERVICES

30A Thistle Green, Swavesey
Cambridge CB24 4RJ

01954 270028 / 07703 568 474
dellartreeservices@hotmail.co.uk

R.A. Denton

Painting & Decorating

High Quality



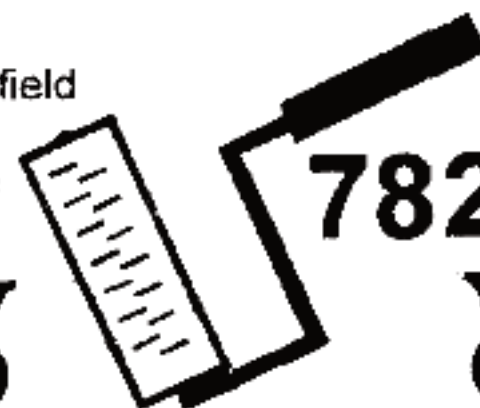
Industrial

Commercial

Domestic



102, Stonefield
Bar Hill
Cambridge
CB3 8TB



782472



Put your love in writing

Be there for your family
when they need you most

- ✓ Protect your children and partner with a Will
- ✓ Look after elderly parents with Lasting Powers of Attorney
- ✓ Set up a Trust for a disabled child
- ✓ Protect your family's property and assets
- ✓ Minimise care home fees and funeral costs
- ✓ Reduce Inheritance Tax and Probate fees

**Take
action
today!**

Call, email or text Just Wills
for a FREE home consultation
Phone: 01223 655646
Mobile: 07930 197432
info@justwillscambridge.co.uk

Just Wills (Cambridge) is the local office of Just Wills & Legal Services Ltd. Since 1989 we've helped more than 150,000 families like yours plan for the future with our friendly, money-saving service and professional expertise. Call us for a chat and advice!

- Wills, Trust and Probate specialists
- Society of Trust and Estate Practitioners (STEP) qualified solicitors
- Backed by full professional indemnity insurance
- Member, The Society of Will Writers
- Member, Professional Association of Legal Services

JUST WILLS
Just Wills (Cambridge) LLP

Just Wills (Cambridge)
St John's Innovation Centre
Cambridge CB4 0WS



For all your building requirements contact

GEORGE HENDRY & SON Building Contractors

◆◆◆
33 Wallmans Lane ◆ Swavesey
◆ Cambridge CB4 5QY

Answerphone/Fax 01954-232960
Mobile 077 78 686791

Member of Federation of Master Builders
Registered with NHBC

Eyes of Swavesey
Opticians



2 Botolph Road, Swavesey, Cambridgeshire CB24 4JZ
T: 01223 232928 E: info@eyesofswavesey.co.uk

Under new ownership.
For all your eyecare & eyewear needs.
Come to your local, friendly, professional
& caring optician at Eyes of Swavesey.



La` Mac
Hairdressing for all
the family



- ◆ Friendly Service
- ◆ Traditional & up to date styling
- ◆ Fully trained in all colouring techniques
- ◆ Senior Citizens discount (Tue & Wed)
- ◆ Open Tuesday - Saturday (late 7.00pm Thursday)
- ◆ Wedding and Ball packages

We aim to provide a professional yet friendly atmosphere to make your visit as pleasant an experience as possible. So if you are thinking of a change please pop in and ask for Wendy, Charlotte or Estelle. They will be pleased to help

01954 231 445 **2a Market Street** **Swavesey**
Cambridgeshire **CB24 4QG**

montagu physio clinic

For people who struggle with pain, our physiotherapy treatment can provide the relief you need to get you back on track.

If it hurts ... we can help

- Back & Neck pain
- Joint replacement
- Sports injuries
- Neurological conditions

Improving pain, flexibility, mobility & recovery

Creating a better life for our patients

Visit our website www.montaguclinic.com or call us on 01480 460049

MOBILITY EQUIPMENT


SCOOTERS, WHEELCHAIRS, RISING CHAIRS, BEDS, WALKERS, TOILET, BATHING, KITCHEN AIDS, STAIRLIFTS, CONTINENCE CARE

Orchard Mobility Centre
Scotsdales Garden Centre
High Street
Horningsea
CB25 9JG




01223 863908
Mon to Sat 9.00 - 5.00

Off to pastures new?



No two people move for exactly the same reason, no two moves are identical. So as well as using the experience of more than 20 years in agency, we come to every move with fresh eyes, listening carefully to what makes you and your plans different. Because it's only by treating all of our customers as individuals that we get the right result for them.

If you need more information, call us on **01954 781411** 8am - 10pm everyday

haart  www.haart.co.uk

LIGHT REMOVALS

Small Houses to Single Items


ANY DISTANCE
7 Days a Week

For a Free Quote

Telephone:
01480 352220
07711 556833

www.cambslightremovals.com

Accountancy & Taxation Services




- Tax Returns
- Business Accounts
- Bookkeeping
- VAT Returns
- Payroll
- Audits

L.A. Wells FCCA CTA
Chartered Certified Accountant, Chartered Tax Advisor

4 Sconeys
Fenstanton
Huntingdon
Cambridgeshire
PE28 9QG

Tel: 01480 466 197



www.lwells.co.uk

Swavesey Windmill

Hale Road Swavesey Cambridge CB24 4QP
Tel: 01954 232 247

Fantastic function hall with licensed Bar available for hire for any event, set in the grounds of The Windmill.

Private parties, Fundraising
Charity Nights, & Band Concerts!

Licensed with Cambridge County Council
For Weddings, Civil Partnerships,
& Baby Naming Ceremonies

To book to view or hire please phone Pam or Lisa.
To keep updated on events follow
Swavesey Windmill on Facebook



Avenue

Property Management

Quality Property Rental service

A local, personal & professional approach to all aspects of property management & letting

We provide a friendly & efficient service to Landlords and Tenants supported by 22 years' property experience

We look forward to hearing from you for an informal chat

Tel: 01223 353 353 or 01354 691 560

enquiries@avenue-properties.co.uk

The Body Shop at Home With Ann

Available for Fetes, Festivals,
Fundraising, Pamper Parties and
Online shopping

For more information please contact
Ann 07702 748256

annnolan@hotmail.co.uk

<https://www.facebook.com/groups/611500742578609/>



Murray Heating Services

Commercial & Domestic



563084



- ❖ Boiler Servicing from £55.00
- ❖ Natural Gas & LPG Servicing
- ❖ Gas Appliance & Heating System Fault Diagnosis & Repairs
- ❖ Boiler & Heating System Upgrades
- ❖ Compliance Checks & Landlords Certificates
- ❖ Catering & Laundry Equipment Maintenance
- ❖ Unvented Hot Water Cylinder Maintenance
- ❖ Plumbing Repairs
- ❖ Out of Hours & Weekend Appointments
- ❖ Increase heating performance & efficiency with a **MagnaCleanse System**
Desludge & Descale from £350.00
Including the fitment of **MagnaClean Filter** for ongoing protection

Contact us for a quote today...

Tel: 07948 548 492

email: murrayheatserv@icloud.com



Let me take care of your pet family!

- FREE HOME DELIVERY
- Local Cambridge Business
- Quality Food at Direct Prices
- Pet Food Treats & Accessories
- All Ingredients Declared
- Gluten Free & Hypoallergenic Foods
- Let Me Deliver Your Cat Litter

Hassle free!




Call Teresa & Stuart
your Cambridge Nutritional Advisors on
01954 712633 / 07516184185

OSCAR *you call / fetch!*

www.oscar.co.uk Search for Oscar Pet Foods Cambridge





Local, family run business who thrive on transforming project dreams into a stunning reality!

Extensions – Conversions – New Builds – Groundworks – Bathrooms

Kitchens – Flooring – Electrical works – the list is endless!

www.ajcarpentry.co.uk

07989 341724 / 07812 671495

Special Fees apply for readers



114-116 Regent Street, Cambridge, CB2 1DP Tel: 01223 462 013

There's a reason these signs are everywhere... ..we're serious about your property

Call now for a free market appraisal
Tel: **01223 462013**
Email: cambridge@morrisarmitage.co.uk

114-116 Regent Street, Cambridge, CB2 1DP Tel: 01223 462 013



The World of Travel is now in Over High Street.
Ponders Travel opened a new Travel Agency in January 2019.

Opening hours
Monday – Friday, 9.30am – 5.30pm
Saturday, 9.30am – 4.00pm

Pop in and see our new shop at The Gallery, 25 High Street, Over
Special Offers | Tailor Made holidays | 35 years' experience

Contact us today for more information
01954 232802 | sales@ponderstravel.co.uk | www.ponderstravel.co.uk




TAIT FINANCIAL SERVICES

A wealth of expertise on your doorstep

We provide an experienced wealth management service and offer specialist advice in a wide range of areas including:

- Investment planning
- Retirement planning
- Inheritance Tax planning

For further details contact James Tait on:

Tel: 01954 231768
Mob: 07768 305151

Email: james.tait@sjpg.co.uk
 Website: www.taitfinancialservices.co.uk

Contact us:
 david@rosegatefarm.co.uk
 07822 550171



Rose and Crown Road Road, Swavesey

Butchery Open Monday (8.30am - 2.30pm) & Saturdays (8.30am - 1.30pm)
www.rosegatefarm.co.uk

bespoke Butchery – customised to suit your requirements

<p>BEEF</p> <ul style="list-style-type: none"> - Primarily from our own Hereford & Angus herd - All at least 21-day aged 	<p>LAMB</p> <ul style="list-style-type: none"> - Swavesey born and bred - Individual cuts, or 1/2, 3/4 or whole lamb parcels available
<p>PORK</p> <ul style="list-style-type: none"> - Bred & reared here at Rosegate Farm. - Home-made sausages, dry-cured bacon and gammons (available when in season) - Cooked Ham 	<p>CHICKEN (sourced from Diaper Poultry)</p> <ul style="list-style-type: none"> - Subon Hoop Free Range - St George Chicken

BBQ Meats – Burgers – Kebabs – Glazes

Get your in the morning!



STEPHANIE'S CARE

CARE AND SUPPORT IN YOUR OWN HOME
 Qualified in Health and Social Care- Level 3

I provide care with compassion and kindness, whilst respecting confidentiality and the choice of each individual. If you think I may be able to help, please contact me for an informal chat and further information

Telephone : 01353 777 789
 Mobile : 07800 668 788

References Available
 15 years extensive experience
 Fully Insured & DBS Checked

Rothwell's
 Carpet Cleaning

**Carpet, Stone Floor,
 Upholstery & Rug Cleaning**

A few points that make us stand out,

Rothwell's has been in business since 1993
 We're an honest local family firm.
 Our large truck mounted machines mean more cleaning & drying power for the best results possible.
 Members of both the NCCA and TACCA.
 We will move the furniture.
 100% satisfaction or it's FREE.

Call Oliver and Max Campbell for expert help today.

01223 832 928
www.Rothwells.biz



SWIMMING LESSONS
SWAVESEY and OVER

28 years proven swimming teaching excellence

WEEKLY LESSONS
PARENTS & BABIES
PARENTS & TOTS
CRASH COURSES!

07810 720829
 www.sealsswimming.co.uk office@sealsswimming.co.uk

**CHIMNEY SWEEP
Cambridgeshire
Trading Standards
Approved**



- Fully Insured
- Enhanced CRB Check
- Certificates issued
- Bird nests removed
- All types of chimney swept
- No Mess, No Fuss



MAKE AN APPOINTMENT
TODAY WITH

SWEEPOVER

Tel: 01954 230777

Mob: 07779711458

www.sweepover.co.uk

19 New Road, Over, CB24 5PJ



**ARE YOUR WINDOWS
READY FOR THE SUMMER ?**

Give them a new lease of life with CST

NO CALL OUT CHARGES

All repairs carried out on UPVC,
Aluminium or Timber Installations

- ▶ Windows, Doors, Conservatories
- ▶ Conservatory Roofs
- ▶ Misted or Broken Glass
- ▶ Broken Handles, Hinges and Locks
- ▶ Cat Flaps and Letter Plates
- ▶ Door panel fitting

C.S.T

DOUBLE GLAZING REPAIRS
& Lock Maintenance

Tel: 01480 462 948

Mob: 07973 682562

www.cstupvcrepair.co.uk

cst.dgrepairs@googlemail.com



**Total
Relaxation**
at the farmhouse

Open 6 days a week

Tel: 01954 789 344

Aromatherapy, Body Massage, Indian Head Massage, Reflexology, Hot Stone Massage, Hopi Ear Candles, Facials, Nail Extensions, Manicures & Pedicure, Gel Polish, Lash and Brow Treatments, Waxing, Hairdressing

Gift vouchers always available

www.total-relaxation.co.uk

email: total.relaxation@ntlworld.com

The Old Farmhouse, Gladeside, Bar Hill, Cambridge CB23 8DY

**Early booking
is advisable!**

**THE WINDMILL
KENNELS AND CATTERY**



A professional business offering
kind & experienced care for your pets.



Viewing and opening times:
Monday to Friday 9am – 11am & 4pm – 6pm.
Saturday 9am – 11am.

01954 232603

windmillkennels@oneservice.co.uk

The Foot Care Clinic Willingham

Mrs Casey A. Javed BSc (Hons) Podiatry, SRCh, MChS, HCPC, NICE Registered
Mr. T.K. Javed BSc (Hons) Podiatry, SRCh, MChS, HCPC, NICE Registered

- General chiropody – nails, hard skin & corns
- Diabetic foot care
- Children's Feet – Growing pains, Verrucas, etc.
- Sporty Feet & associated injuries – pains
- Ingrowing toe nails – surgical option available
- Custom made Orthotics/ insoles
- Biomechanics & Gait analysis



New Clients Always Welcome
Saturday Appointments & Home Visits Available

Willingham Medical Practice, 52 Long Lane
Willingham CB24 5LB
T: 01480 464507
or 07807 505534

Scrivens Opticians
1 Crown Place, St. Ives
PE27 5PD
T: 01480 301337
or 07807 505534

www.stivespodiatry.co.uk

The Foot Care Clinic Willingham

Casey set up the foot care clinic Willingham in January 2015, and the clinic is going from strength to strength. Currently operating on a Monday morning and hopefully adding a Wednesday morning from September. Casey and her husband Kaseem also have clinics in St. Ives and Warboys.

Mrs Casey A. Javed BSc (Hons) Podiatry, SRCh, MChS.

Casey qualified in 2001 from University College Northampton with a Bachelor of Science Honours degree in podiatry. She worked for the NHS gaining experience in diabetes care, rheumatology, biomechanics and nail surgery, before moving to the private sector and working for Boots Healthcare. For the past 7 years she has been practice manager for St. Ives Chiropody & Podiatry, although she is now also working as a practising podiatrist for the clinic and also doing home visits. She is married, with 3 children and enjoys running in her spare time, having completed several 10k races and a half marathon. Casey takes your foot health very seriously, and at The Foot Care Clinic Willingham each and every foot condition is treated empathically and in confidence to keep you pain free and mobile.

T.N. WALSH (AIP-RP)

PLUMBING & HEATING

5 ACORN AVENUE
BAR HILL
CAMBRIDGE
CB23 8DT

TELEPHONE 01954 780252
MOBILE 07887 561525



Reg. No.
23354



026851 I

The Ultimate
FLOOR SANDING
Company

AFFILIATED SERVICE PROVIDER

Dust Free Wood Floor Sanding & Restoration

Is your Wooden Floor in need of
Sanding?

Call us today **01223 863 632**

Please quote "Swavesey Mag"

www.floorsandingcambridge.co.uk



Discover...

A selection of beautiful individual villas & houses with pools in
tranquil settings & areas of traditional local culture.

GREECE • SPAIN • LANZAROTE • BALEARICS
PORTUGAL • FRANCE • ITALY • CROATIA

Vintage
travel

Now in our 22nd year

Your
Local Holiday
Company

Call for a brochure or to speak to one of our specialists

01954 261431

or visit our website www.vintagetravel.co.uk



ABTA
1884-191001

Delicious & delivered

- FREE NATIONWIDE DELIVERY
- MEALS FROM ONLY £2.99
- OVER 300 TASTY RECIPES
- NO CONTRACT,
NO COMMITMENT

Call us for your FREE brochure

01371 876970

wiltshirefarmfoods.com



Wiltshire Farm Foods



MAGAZINE ADVERTISING RATES

ADVERTISING RATES AS FROM JANUARY 2020.
For a one year inclusion i.e. six issues.

Size	Advertiser	Magazine
Full page	£186	
Half page	£95	£136
Quarter page	£63	£84

The following rates are for one inclusion only and as a premium rate is already charged will be positioned in the magazine section:-

Half page one inclusion only £75

A small charge may be made for creating and amending artwork

For all advertising details please contact:

David Gedny Tel: 01954 231305 Mob: 079 022 40061 or

Email: adverts@swaveseymeridian.org.uk



Plumbing and heating supplies
to the trade and public



We are a local independent company supplying
all your plumbing & heating needs, including:

**Bathroom Taps • Boilers • Bathroom Suites
Underfloor Heating • Central Heating Radiators
Heated Towel Rails • Showers • Kitchen Taps
Sinks • Baths • Sanitaryware
Plastic Plumbing Systems • Fittings**

Do not hesitate to ring, email or visit...

Unit 10, Norman Way Industrial Estate, Over, Cambridge CB24 5QE.
Tel: 01954 230268. E-mail: info@dandtsupplies.co.uk www.dandtsupplies.co.uk

EXTRA MAGAZINES

Send a Meridian Magazine subscription to your favourite Auntie, or to a friend who has recently left the village.

Six issues (one year) costs only £12.00.

Send a cheque (made out to 'The Meridian Magazine') and the address of the recipient, to:

Jan Waller, Meridian Subscriptions,
35 Carters Way, Swavesey, Cambridge, CB4 5RZ

NOTIFICATION OF MAJOR EVENTS

Please use this form to notify us of any major events you are organising so that we can publish the dates in the magazine and on the website at www.swaveseymeridian.org.uk. It is hoped this will avoid major events clashing on the same day. Please send to the Editor, 14 Black Horse Lane, Swavesey.

Event _____

Location _____ Date _____ Time _____

Contact Name _____ Tel No. _____

BIRTHDAYS, ANNIVERSARIES & SPECIAL OCCASIONS

If you would like to mark any occasion that is special to you or somebody that you know by announcing it in this magazine, please fill in the form below.

Also supply your name and contact details, and return to the Editor by the copy date. We will endeavour to include it in our next issue.

SHORT MESSAGE:

USEFUL TELEPHONE NUMBERS & WEBSITES		
Doctor's Surgery (Swavesey)	01954-230202	
Doctor's Surgery (Over)	01954-231550	
Police:		www.cambs.police.uk
Emergency	999	
All Non Emergency Calls	101	
Swavesey Neighbourhood Watch	07830 110062	www.swavesey.org.uk/neighbourhood-watch/
Swavesey Pre-school Enquires	01954 273312	preschool@swavesey.cambs.sch.uk
Swavesey Primary School	01954-273312	www.swavesey.cambs.sch.uk/
Swavesey Village College:	01954-230366	www.swaveseyvc.co.uk
Community Office	01954-230373	
Swavesey Post Office	01954-232311	
Cambridgeshire County Council:		www.cambridgeshire.gov.uk
General Enquiries	0345 045 5200	
Library Service	0345 045 5225	www.cambridgeshire.gov.uk/leisure/libraries
South Cambs District Council	0345 045 0500	www.scambs.gov.uk
Electricity (UK Power Networks):		
Emergencies	0800-7838838	www.ukpowernetworks.co.uk
Gas Emergencies (National Grid)	0800-111999	www.nationalgrid.com/uk/gas
Water (Cambridge Water Company):	01223-706050	www.cambridge-water.co.uk
Sewage (Anglia Water) Emergency	08457 145145	www.anglianwater.co.uk
Environment Agency (Flood Line):	0845 988 1188	www.environment-agency.gov.uk
Incident Reporting Line (pollution etc)	0800 807060	
Samaritans	08457-909090	www.samaritans.org.uk
Addenbrooke's Hospital:		www.addenbrookes.org.uk
Accident & Emergency	01223-217118	
General	01223-245151	
Hinchingbrooke Hospital	01480-416416	www.hinchingbrooke.nhs.uk
NHS Direct	111	111.nhs.uk
Airports + Road & Rail:		
Local Taxi: Alpha Cars	01954 232300	www.alphacarsonline.co.uk
Gatwick	0844 3351802	www.gatwickairport.com
Heathrow	0844 3351801	www.heathrowairport.com
Luton	01582-405100	www.london-luton.co.uk
Stansted	0844 3351803	www.stanstedairport.com
Traveline (Bus Coach & Rail)	08706-082608	www.traveline.org.uk
Transport Direct (Coach, Rail, Flight)		www.transportdirect.info
Local Timetables:		
Cambridgeshire CC Bus Information		www.cambridgeshire.gov.uk/transport
Stagecoach	01223-423578	www.stagecoachbus.com
National Express Coaches	0871 7818178	www.nationalexpress.com
Whippet Coaches	01954-230011	www.go-whippet.co.uk
National Rail	08457-484950	www.nationalrail.co.uk
Veterinary Practices:		
Village Vet (Longstanton)	01954-780027	www.villagevet.co.uk
Ash Croft (Hardwick)	01954-210250	www.ashcroftvet.co.uk



April Burgess Martin School
of Ballet
presents a triple bill

Classical Symphony

Façade

Gaité Parisienne

Saturday 16th May 2020
Swavesey Village College
3.15pm & 7.30pm

Tickets £9
Family Ticket (2 adults & 2
concession) £32
Book on tutusrus@ntlworld.com
01954 200533



Cancelled



Postponed until 2021

Come and support the

Swavesey Festival

Starting on Saturday 6th June

with open gardens, allotments, flower festival, exhibitions and
'Around the World in 80 Cakes' Café!

Grand Finale on Saturday 13th with Gala Day

including the walking parade, village show, afternoon
entertainment and evening music from Grape Marmalade and
Big10, who will be leading us into our Firework Finale!